

# **DELHI TRANSCO LTD.**

STATE LOAD DISPATCH CENTER

## **PROGRESS REPORT**

\*\*\*\*\*

NOVEMBER 2013

<b>S. No.</b>	<b>CONTENTS</b>	<b>Page No.</b>
<b>1.</b>	<b>Salient Features of Delhi Power System</b>	<b>3</b>
<b>2.</b>	<b>Performance of Generating Stations within Delhi</b>	<b>4</b>
<b>3.</b>	<b>Details of Outage of Generating Stations within Delhi</b>	<b>5-21</b>
<b>4.</b>	<b>Allocation of Power to Delhi from unallocated quota of central sector</b>	<b>22-25</b>
<b>5.</b>	<b>Allocation of Power to Discoms</b>	<b>26-27</b>
<b>6.</b>	<b>Power Availability Demand Position of Delhi at the time of occurrence of Peak Demand</b>	<b>28</b>
<b>7.</b>	<b>Power Availability Demand Position of Delhi at the time of occurrence of Maximum Un-Restricted Demand</b>	<b>29</b>
<b>8.</b>	<b>Source wise scheduled drawl from grid and Availability within Delhi</b>	<b>30-32</b>
<b>9.</b>	<b>Shedding Details</b>	<b>33-36</b>
<b>10.</b>	<b>Load Curve for the Day of Peak Demand</b>	<b>37</b>
<b>11.</b>	<b>Load Curve for the day of occurrence of Maximum Un-Restricted Demand</b>	<b>38</b>
<b>12.</b>	<b>Load Curve for the day of Maximum Energy Consumed</b>	<b>39</b>
<b>13.</b>	<b>Load Curve for the day of Maximum Un-Restricted Energy Demand</b>	<b>40</b>
<b>14.</b>	<b>Load Duration Curve</b>	<b>41</b>
<b>15.</b>	<b>Frequency Analysis</b>	<b>42</b>
<b>16.</b>	<b>Voltage Profile for significant 220kV Sub-Stations</b>	<b>43</b>
<b>17.</b>	<b>Voltage Profile for significant 400kV Sub-Stations</b>	<b>44-45</b>
<b>18.</b>	<b>Details of Capacitors Installations in Delhi</b>	<b>46-51</b>
<b>19.</b>	<b>Tripping Details of 400/220 KV System in Delhi Power System</b>	<b>42-53</b>
<b>20.</b>	<b>Details of Under frequency Relay operations in Delhi Power System</b>	<b>54</b>

**SALIENT FEATURES OF DELHI POWER SYSTEM**

<b>Sr. No.</b>	<b>Features</b>	<b>NOVEMBER 2012</b>	<b>NOVEMBER 2013</b>
<b>1</b>	<b>Effective Generation Capacity within Delhi in MW</b>		
	Rajghat Power House	135	135
	Gas Turbine	270	270
	Pragati Power Corporation Ltd.	330	330
	Badapur Thermal Power Station	705	705
	Rithala GT	108	108
	Bawana	685	902
	TOWMCL	16	16
	Total	2249	2466
<b>2</b>	<b>Maximum Unrestricted Demand (MW)</b>	<b>3234</b>	<b>3576</b>
	Date	23.11.2013	01.11.2013
	Time	18.25.48	18.37.51
<b>3</b>	<b>Peak Demand met (MW)</b>	<b>3234</b>	<b>3576</b>
	Date	23.11.2012	01.11.2013
	Time	18.25.48	18.37.51
4	Peak Availability (MW)	3229	3727
5	Shortage (-) / Surplus (+) in MW	(-) 5	(+) 151
6	Percentage Shortage (-) / Surplus (+)	(-) 0.15	(+) 4.19
7	Maximum Energy Consume in a day (Mus)	57.094	61.622
8	Energy Consumed during the month	<b>1599.933</b>	<b>1601.450</b>
<b>9</b>	<b>Load Shedding in Mus</b>		
A)	Due to Grid Restrictions		
i)	Under Frequency Relay Operations	0.000	0.021
ii)	Manual Load shedding from DTL S/Stns.	0.000	0.000
iii)	Load Shedding due to low frequency / Low Voltage / TTC/ATC Violation		
	NDPL	1.282	0.146
	BRPL	1.052	0.284
	BYPL	0.552	0.104
	NDMC	0.000	0.000
	MES	0.000	0.000
iv)	Due to transmission Constraints in Central Sector	0.030	0.000
	<b>Total due to Grid Restriction</b>	<b>2.916</b>	<b>0.555</b>
B)	Due to Constraints in System in Mus		
	DTL	0.262	0.183
	NDPL	0.907	0.197
	BRPL	0.161	0.249
	BYPL	0.888	0.076
	NDMC	0.000	0.000
	MES	0.000	0.000
	Other Agencies	0.015	0.000
	<b>Total</b>	<b>1.612</b>	<b>0.707</b>
<b>11</b>	<b>Grand Total in Mus</b>	<b>4.528</b>	<b>1.262</b>

2. PERFORMANCE OF GENERATING STATIONS WITHIN DELHI DURING NOVEMBER 2013

A) For the month of November 2013

All Figures in MUs

S. No	Stations	Gross Generation	Aux. Consumption	Net Generation	Availability (%)	Backing Down
1.	RPH	4.991	1.010	3.981	83.03	68.829
2.	GT	58.891	1.786	57.105	90.22	113.493
3.	PPCL	211.708	5.180	206.528	100.36	25.685
4.	BTPS	250.132	25.685	224.447	78.87	129.385
5.	Rithala	0.000	0.061	-0.061	<b>89.17</b>	59.04
6.	Bawana	0.000	1.144	-1.144	103.92	657.113
7.	Towmcl	12.450	1.677	10.773	--	--
	<b>TOTAL</b>	<b>538.172</b>	<b>36.543</b>	<b>501.629</b>	--	<b>1053.545</b>

B) For the Year 2013-14 (Upto November 2013)

Power Station	Effective Capacity (MW)	Net Generation in MUs for Nov. 2013	Availability (%) for Nov. 2013	PLF (%) for Nov 2013	Cumulative Generation in MUs upto Nov 2013 for the year 2013-14	Cumulative Availability in % upto Nov 2013 for the year 2013-14	Cumulative PLF in % upto Nov. 2013 for the year 2013-14
RPH	135	3.981	83.03	3.21	301.628	44.11	59.21
GT	270	57.105	90.22	30.03	698.051	87.68	45.71
PPCL	330	206.528	100.36	89.21	1563.360	91.29	83.17
BTPS	705	224.447	78.87	50.23	2609.032	91.91	70.28
Rithala	108	-0.061	<b>89.17</b>	0	-0.750	<b>88.81</b>	<b>0.06</b>
Bawana	902	-1.144	103.92	-0.4	613.958	91.41	12.71
Towmcl	16	10.773	--	108.07	65.834	--	--
<b>TOTAL</b>	<b>2466</b>	<b>501.629</b>	--	--	<b>5851.113</b>	--	--

### 3 DETAILS OF OUTAGES OF GENERATING STNS. WITHIN DELHI W.E.F. APRIL 2012

#### (A) RPH STATION

Unit No	Capacity in MW	Outage		Synchronization		Reason of Outage
		Date	Time	Date	Time	
1	67.5	03.04.13	18.35	03.04.13	19.45	Unit tripped due to drum level very low.
		04.04.13	08.55	04.04.13	09.45	Unit tripped due to drum level low.
		14.04.13	10.20	14.04.13	15.40	Unit desynchronised to attend the CW line leakage.
		19.04.13	08.25	19.04.13	16.40	Unit desynchronised to attend the Boiler window repairing.
		19.04.13	17.00	19.04.13	17.30	Unit tripped due to bay no. 20 tripped.
		03.05.13	20.00	05.05.13	03.30	Unit desynchronised to attend the Boiler tube leakage.
		05.05.13	11.40	05.05.13	13.40	Unit tripped due to drum level low.
		05.05.13	15.55	05.05.13	20.15	Dark out due to Reactor on bay no. 9 had been blasted.
		19.05.13	07.10	24.05.13	04.40	Unit desynchronised due to shortage of coal fuel and to attend the CW line leakage.
		25.05.13	01.50	25.05.13	03.20	Unit tripped due to Furnace pr. very high.
		01.06.13	12.40	01.06.13	13.55	Unit tripped due to drum level low.
		02.06.13	11.55	02.06.13	13.05	Unit tripped due to Furnace pr. very high.
		06.06.13	17.10	06.06.13	20.05	Dark out due to 22K 9F, unit tripped.
		16.06.13	18.35	19.06.13	13.50	Unit desynchronised as per system operation.
		21.06.13	22.50	24.06.13	14.50	Unit desynchronised to attend the Boiler tube leakage.
		02.07.13	12.55	02.07.13	14.25	Dark out due to grid disturbance.
		09.07.13	23.30	10.07.13	00.25	Unit tripped due to flame failure.
		10.07.13	00.40	10.07.13	03.40	Unit tripped due to ST-1 trip.
		10.07.13	04.10	10.07.13	04.35	Unit tripped due to furnace pressure high.
		10.07.13	04.40	15.07.13	12.05	Unit tripped due to furnace pressure high (suspected boiler tube leakage).
		16.07.13	11.00	22.07.13	00.05	Unit tripped due to furnace pressure very high.
		22.07.13	03.55	22.07.13	04.25	
		22.07.13	10.45	22.07.13	12.00	Dark out due to 220kv supply failure.
		23.07.13	19.15	01.08.13	23.00	Unit tripped on furnace pressure very high due to boiler tube leakage.
		02.08.13	10.00	02.08.13	10.50	Unit tripped due to flame failure
		03.08.13	10.55	03.08.13	12.35	Dark out due to grid disturbance
		03.08.13	12.45	03.08.13	13.05	Unit tripped due to drum level low
		03.08.13	13.15	03.08.13	13.45	Unit tripped due to turbine trip
		07.08.13	19.35	07.08.13	20.55	Unit tripped due to flame failure
		07.08.13	21.05	07.08.13	22.25	Unit tripped due to drum level very low
		08.08.13	08.05	16.08.13	17.40	Stopped due to low demand and high frequency
		21.08.13	06.55	21.08.13	08.35	Unit tripped due to turbine trip
		22.08.13	02.15	22.08.13	03.00	Unit tripped on furnace pressure very high
		22.08.13	22.00	27.08.13	17.40	Unit tripped due to heavy steam leakage from turbine control valve
		11.09.13	03.23	12.09.13	15.15	Shortage of raw water
		16.09.13	05.05	16.09.13	12.19	Coal mill problem
		22.09.13	05.58	24.09.13	14.00	Stopped due to low demand and high frequency
		27.09.13	23.00	27.09.13	23.30	Furnance pressure high
		28.09.13	17.00	28.09.13	18.00	Flame failure
		28.09.13	18.10	28.09.13	18.35	Furnance pressure very high
29.09.13	18.45	29.09.13	19.10	Flame failure		
29.09.13	23.20	07.10.13	18.15	Desynchronised to attend main stream temp; control line leakage		
07.10.13	20.50	07.10.13	21.25	Furnance pressure very high		

Unit No	Capacity in MW	Outage		Synchronization		Reason of Outage
		Date	Time	Date	Time	
1	67.5	10.10.13	10.35	14.10.13	10.40	Boiler tube leakage
		25.10.13	23.15	28.10.13	10.25	Stopped due to less demand and high frequency
		28.10.13	10.45	28.10.13	11.15	Drum level high
		04.11.13	12:00	30.11.13	23.59	Stopped due to low dement

Unit No	Capacity in MW	Outage		Synchronization		Reason of Outage
		Date	Time	Date	Time	
2	67.5	03.04.13	04.10	03.04.13	05.35	Unit tripped due to turbine trip.
		05.04.13	20.00	06.04.13	04.05	Unit desynchronised to attend the economiser tube leakage.
		14.04.13	10.10	14.04.13	18.15	Unit desynchronised to attend the CW line leakage.
		04.05.13	09.20	06.05.13	03.25	Unit desynchronised to attend the Economiser tube leakage.
		11.05.13	17.15	11.05.13	18.00	Unit tripped due to turbine trip.
		11.05.13	23.20	11.05.13	23.45	
		19.05.13	07.15	19.05.13	20.55	Unit desynchronised to attend the CW line leakage.
		24.05.13	05.50	01.06.13	00.25	Unit desynchronised due to shortage of coal fuel.
		01.06.13	19.20	07.06.13	14.20	Unit tripped due to Boiler tube leakage.
		11.06.13	07.15	11.06.13	08.30	Unit tripped due to birdage, bay No. 1 to 9 tripped.
		18.06.13	14.20	18.06.13	15.00	Unit tripped due to turbine trip.
		02.07.13	12.55	02.07.13	14.10	Dark out due to grid disturbance.
		02.07.13	23.55	03.07.13	00.55	Unit tripped due to loss of fuel.
		10.07.13	00.45	10.07.13	02.00	Unit tripped due to emergency board supply failure.
		10.07.13	10.45	10.07.13	11.55	Unit tripped due to fumace pressure very high.
		10.07.13	13.50	10.07.13	17.10	Unit desynchronised due to fumace pressure hunting.
		11.07.13	09.20	12.07.13	19.25	Unit desynchronised, fumace disturbance due to wet coal.
		14.07.13	15.35	14.07.13	16.10	Unit tripped due to fumace pressure very high.
		15.07.13	03.45	15.07.13	04.45	Unit tripped due to fumace pressure high.
		19.07.13	07.50	19.07.13	08.20	Unit tripped due to condensor vaccum low.
		21.07.13	03.55	23.07.13	22.20	Unit desynchronised due to no coal flow.
		24.07.13	17.40	02.08.13	13.20	Unit desynchronised to attend the leakage from ACW line.
		03.08.13	10.55	03.08.13	12.10	Dark out due to grid disturbance
		16.08.13	19.30	23.08.13	22.20	Stopped due to low demand and high frequency
		26.08.13	12.15	26.08.13	13.20	Dark out due to grid disturbance
		28.08.13	22.15	13.09.13	16.23	Unit desynchronised to attend the boiler tube leakage / coal mill problem
		26.09.13	09.55	21.10.13	11.30	Boiler tube leakage
		25.10.13	23.15	26.10.13	00.50	Electrical fault
		30.10.13	16.10	30.11.13	23.59	Stopped due to low demand

(B)

## Gas Turbine

Unit No	Capacity in MW	Outage		Synchronization		Reason of Outage
		Date	Time	Date	Time	
1	30	01.04.13	0:00	01-04-13	5:45	Stopped due to low demand and high frequency
		03.04.13	16:30	10-04-13	11:25	
		18.04.13	23:20	19-04-13	12:01	Machine stopped to rectify the faulty Controller
		19.04.13	12:15	22-04-13	5:47	Stopped due to low demand and high frequency
		29.04.13	11:31	29-04-13	23:37	
		07.05.13	1:45	13-05-13	14:25	
		13.05.13	16:48	13-05-13	17:10	Machine came on FSNL during charging of 160 MVA Trf.
		18.05.13	13:25	21-05-13	21:10	Stopped due to low demand and high frequency
		30.05.13	21:45	17-06-13	22:55	
		17.06.13	23:15	18-06-13	20:15	
		28.06.13	10:52	28-06-13	22:00	
		28.06.13	22:00	29-06-13	17:00	Machine not available due to problem in Diesel Engine
		29.06.13	17:00	01-07-13	18:05	Stopped due to low demand and high frequency
		01.07.13	21:35	02-07-13	17:45	
		02.07.13	17:45	03-07-13	11:45	Machine could not be started due to problem in EOP
		03.07.13	11:45	08-07-13	8:55	Stopped due to low demand and high frequency
		12.07.13	11:50	15-07-13	8:00	
		15.07.13	9:10	15-07-13	10:40	
		17.07.13	11:20	18-07-13	20:35	
		20.07.13	12:05	27-07-13	21:30	
		27.07.13	21:40	28-07-13	0:12	Machine could not be synchronised due to ignition pressure high trip.
		29.07.13	13:55	29-07-13	15:10	Machine tripped due to GCV reference not followed and loss of flame
		31.07.13	10:40	31-07-13	11:27	Machine came on FSNL due to grid disturbance
		31.07.13	17:30	01.08.13	23:42	Stopped due to low demand and high frequency
		02.08.13	1:40	02.08.13	11:45	
		02.08.13	12:40	04.08.13	10:41	
		06.08.13	15:30	08.08.13	20:41	
		09.08.13	1:20	28.08.13	0:30	
		28.08.13	0:30	28.08.13	3:00	Machine taken out from DC due to leakage in ACW line.
		28.08.13	3:00	28.08.13	11:45	Stopped due to low demand and high frequency
		28.08.13	11:45	28.08.13	14:00	due to leakage in ACW line,GT# 1 not available
		28.08.13	14:00	05.09.13	10:53	
		06.09.13	02:17	12.09.13	21:27	
		13.09.13	18:18	07.10.13	12:20	
		11.10.13	09:37	14.10.13	11:15	Stopped due to low demand and high frequency
		15.10.13	03:02	16.10.13	13:44	
		23.10.13	13:15	30.11.13	23:59	

Unit No	Capacity in MW	Outage		Synchronization		Reason of Outage
		Date	Time	Date	Time	
2	30	01-04-13	0:00	01-04-13	5:35	Stopped due to low demand and high frequency
		03-04-13	12:02	09-04-13	5:50	
		10-04-13	17:25	11-04-13	11:45	
		28-04-13	21:40	28-04-13	23:45	
		07-05-13	16:30	13-05-13	17:20	
		17-05-13	16:20	28-06-13	22:00	
		28-06-13	22:00	29-06-13	17:00	Machine not available due to problem in Gas Valve
		29-06-13	17:00	02-07-13	17:45	Stopped due to low demand and high frequency
		02-07-13	17:45	03-07-13	13:15	Machine could not be started due to problem in EOP
		03-07-13	13:15	28.08.13	0:30	Stopped due to low demand and high frequency
		28.08.13	0:30	28.08.13	3:00	Machine taken out from DC due to leakage in ACW line.
		28.08.13	3:00	28.08.13	11:45	Stopped due to low demand and high frequency
		28.08.13	11:45	28.08.13	14:00	due to leakage in ACW line,GT# 2 not available
		28.08.13	14:00	30.11.13	23:59	Stopped due to low demand and high frequency



Unit No	Capacity in MW	Outage		Synchronization		Reason of Outage	
		Date	Time	Date	Time		
3	30	01-04-13	0:00	01-04-13	7:30	Stopped due to low demand and high frequency	
		17-04-13	10:40	22-04-13	8:10		
		28-04-13	21:46	29-04-13	10:55		
		04-05-13	0:05	06-05-13	14:00		
		07-05-13	1:50	07-05-13	12:00		
		11-05-13	19:30	14-05-13	17:15		
		14-05-13	18:23	14-05-13	21:00		
		14-05-13	21:00	17-05-13	15:45		
		06-06-13	17:04	06-06-13	19:00	Machine came on FSNL due to tripping of 160 MVA Tr-I & II at IP Extension end.	
		06-06-13	22:47	07-06-13	11:55	Stopped due to low demand and high frequency	
		09-06-13	8:09	09-06-13	9:50	Machine came on FSNL due to tripping of 160 MVA Tr-I & II Buchholtz relay operated after that tripped on Lube oil temperature high as the auxiliary supply failed .	
		11-06-13	12:45	12-06-13	7:56	Stopped due to low demand and high frequency	
		14-06-13	8:45	17-06-13	20:50		
		23-06-13	23:40	24-06-13	8:16		
		28-06-13	9:40	28-06-13	21:13		
		30-06-13	9:18	01-07-13	17:23		
		02-07-13	12:44	02-07-13	13:40		Machine came on FSNL due to grid disturbance
		12-07-13	14:25	12-07-13	21:30		Stopped due to low demand and high frequency
		11-07-13	11:30	18-07-13	20:40		
		20-07-13	12:06	20-07-13	13:22		
		22-07-13	10:32	22-07-13	10:46	Machine came on FSNL due to grid disturbance	
		22-07-13	11:20	22-07-13	12:55	Machine taken on FSNL due to voltage problem,160 MVA Tx. Not synchronised	
		27-07-13	11:05	27-07-13	21:45	Stopped due to low demand and high frequency	
		28-07-13	20:05	30-07-13	20:53		
		31-07-13	10:40	31-07-13	15:55	Machine tripped due to grid disturbance	
		03.08.13	10:56	03.08.13	11:23	Machine came on FSNL due to grid disturbance	
		03.08.13	11:23	05.08.13	19:30	Stopped due to low demand and high frequency	
		06.08.13	15:34	07.08.13	15:40		
		09.08.13	22:15	26.08.13	9:15		
		26.08.13	12:12	26.08.13	12:58	machine tripped due to Grid disturbance	
		28.08.13	0:30	28.08.13	2:50	due to leakage in ACW line,GT not available	
		08.09.13	12:32	11.09.13	11:55	Stopped due to low demand and high frequency	
		12.09.13	12:45	12.09.13	15:06		
		13.09.13	09:15	13.09.13	17:05		
		21.09.13	14:46	24.09.13	08:48		
		02.10.13	00:32	06.10.13	04:55		
		02.11.13	09:20	02.11.13	09:50	Machine tripped due to Exhaust overtemperature trip	
		02.11.13	09:50	02.11.13	17:25	Machine not available due to P2 pressure high .(about 23 kg.)	
		13.11.13	05:05	13.11.13	06:35	Machine tripped due to Exhaust overtemperature trip	
		23.11.13	13:25	23.11.13	17:10	Tripped to change Air Filter.	

Unit No	Capacity in MW	Outage		Synchronization		Reason of Outage
		Date	Time	Date	Time	
4	30	01-04-13	0:00	03-04-13	15:50	Stopped due to low demand and high frequency
		17-04-13	10:40	27-04-13	3:15	
		04-05-13	0:02	06-05-13	14:13	
		07-05-13	13:20	07-05-13	15:55	
		11-05-13	19:32	14-05-13	9:58	
		21-05-13	13:10	21-05-13	17:10	
		30-05-13	3:05	05-06-13	11:58	
		06-06-13	17:04	06-06-13	17:15	Machine came on FSNL due to tripping of 160 MVA Tr-I & II at IP Extension end.
		09-06-13	8:09	09-06-13	9:40	Machine came on FSNL due to tripping of 160 MVA Tr-I & II Buchholtz relay operated after that tripped on Lube oil temperature high as the auxiliary supply failed .
		11-06-13	12:45	12-06-13	7:54	Stopped due to low demand and high frequency
		14-06-13	10:20	17-06-13	23:59	
		18-06-13	0:00	19-06-13	21:45	machine not available due to non availability of 66 KV breaker.
		19-06-13	21:45	21-06-13	9:22	Machine not taken on bar due to less schedule from SLDC.
		24-06-13	14:46	24-06-13	15:30	Stopped due to low demand and high frequency
		28-06-13	9:30	28-06-13	22:00	
		28-06-13	22:00	29-06-13	12:10	machine not available due to non availability of AC AOP
		02-07-13	12:44	02-07-13	13:05	Machine came on FSNL due to grid disturbance
		17-07-13	11:30	18-07-13	23:27	Stopped due to low demand and high frequency
		22-07-13	10:32	22-07-13	11:02	Machine came on FSNL due to grid disturbance
		24-07-13	10:10	01.08.13	22:55	Stopped due to low demand and high frequency
		03.08.13	10:56	03.08.13	11:58	Machine came on FSNL due to grid disturbance
		04.08.13	12:50	05.08.13	20:05	Stopped due to low demand and high frequency
		10.08.13	13:32	26.08.13	9:10	
		26.08.13	12:12	26.08.13	13:05	Machine came on FSNL due to grid disturbance
		28.08.13	0:32	28.08.13	3:00	due to leakage in ACW line,GT not available
		28.08.13	3:00	28.08.13	5:12	Stopped due to low demand and high frequency
		08.09.13	12:34	11.09.13	11:56	
		12.09.13	12:45	12.09.13	15:05	
		15.09.13	12:37	15.09.13	20:02	
		17.09.13	21:30	19.09.13	09:27	
		21.09.13	14:48	24.09.13	07:40	
		03.10.13	16:55	06.10.13	10:05	
		11.10.13	08:36	11.10.13	10:30	Machine tripped on high exhaust temperature
18.11.13	14:05	18.11.13	17:45	Tripped to clean air filter		

Unit No	Capacity in MW	Outage		Synchronization		Reason of Outage
		Date	Time	Date	Time	
5	30	28-04-13	9:34	06-05-13	13:25	Stopped due to low demand and high frequency
		13-05-13	16:48	14-05-13	9:27	
		14-05-13	9:47	18-05-13	10:56	
		24-05-13	18:52	25-05-13	9:55	Tripped due to R-communication link failure alarm & master protective alarm appeared.
		06-06-13	17:04	06-06-13	17:48	Machine came on FSNl due to tripping of 160 MVA Tr-I & II at IP Extension end.
		09-06-13	8:09	09-06-13	8:54	Machine came on FSNL due to tripping of 160 MVA Tr-I & II Buchholtz relay operated after that tripped on Lube oil temperature high as the auxiliary supply failed .
		09-06-13	8:54	10-06-13	7:47	Machine not taken on load due to low schedule from SLDC
		17-06-13	12:17	17-06-13	14:00	Machine tripped on Bus under Voltage alarm as 66 KV bus became dead due to tripping of 160 MVA Tx-I & II .
		18-06-13	13:53	18-06-13	15:45	Machine tripped at IGV Control trouble and Fire Protection Alarm.
		02-07-13	12:44	02-07-13	13:08	Machine came on FSNL due to grid disturbance
		06-07-13	10:55	08-07-13	9:15	Stopped due to low demand and high frequency
		08-07-13	11:32	11-07-13	23:00	
		11-07-13	23:00	12-07-13	10:29	Machine could not be synchronised due to Overall diff. opearted problem
		12-07-13	20:42	15-07-13	8:55	Stopped due to low demand and high frequency
		16-07-13	8:29	16-07-13	9:55	Machine tripped on electrical trouble normal shut down (Due to MVR problem)
		17-07-13	3:00	17-07-13	5:00	
		20-07-13	13:33	23-07-13	21:15	Stopped due to low demand and high frequency
		31-07-13	10:40	31-07-13	10:50	Machine came on FSNL due to grid disturbance
		03.08.13	10:56	03.08.13	11:10	Machine came on FSNL due to grid disturbance
		07.08.13	14:45	08.08.13	21:05	Stopped due to low demand and high frequency
		26.07.13	12:12	26.08.13	12:38	Machine came on FSNL due to grid disturbance
		26.08.13	20:00	27.08.13	11:10	Stopped due to low demand and high frequency
		28.08.13	0:25	28.08.13	2:55	due to leakage in ACW line,GT not available
		30.08.13	22:15	04.09.13	15:00	Stopped due to low demand and high frequency
		02.10.13	00:30	03.10.13	15:15	
		05.10.13	21:14	05.10.13	22:05	Machine tripped due to Grid disturbance
		06.10.13	10:08	07.10.13	07:45	Stopped due to low demand and high frequency
		07.10.13	14:03	30.11.13	23:59	

Unit No	Capacity in MW	Outage		Synchronization		Reason of Outage
		Date	Time	Date	Time	
6	30	10-04-13	12:45	10-04-13	16:30	Stopped due to low demand and high frequency
		21-04-13	12:42	22-04-13	10:15	
		28-04-13	9:32	30-04-13	0:40	
		13-05-13	13:00	13-05-13	16:48	Tripped due to heavy jerk observed in control room.
		13-05-13	16:48	14-05-13	10:38	Stopped due to low demand and high frequency
		14-05-13	18:00	21-05-13	11:05	
		29-05-13	10:42	29-05-13	12:30	Oil temp gauge which is mounted on T/F was found tilted by at least 30 which leads to maloperation of mercury switch and relay 26 TP-I & 26TP-II operated causing the machine tripped on Electrical trouble normal shutdown
		06-06-13	17:04	06-06-13	17:52	Machine came on FSNL due to tripping of 160 MVA Tr-I & II at IP Extension end.
		06-06-13	22:50	07-06-13	12:04	Stopped due to low demand and high frequency
		09-06-13	8:09	09-06-13	8:54	Machine came on FSNL due to tripping of 160 MVA Tr-I & II Buchholtz relay operated after that tripped on Lube oil temperature high as the auxiliary supply failed .
		09-06-13	8:54	10-06-13	7:52	Machine not taken on load due to low schedule from SLDC
		14-06-13	8:50	14-06-13	10:05	Stopped due to low demand and high frequency
		17-06-13	12:17	17-06-13	17:10	Machine tripped on Reverse Power relay operated as 66 KV bus become dead due to tripping of 160 MVA transformer I & II.
		30-06-13	9:07	01-07-13	17:25	Stopped due to low demand and high frequency
		02-07-13	12:44	02-07-13	13:10	Machine came on FSNL due to grid disturbance
		06-07-13	10:50	08-07-13	9:01	Stopped due to low demand and high frequency
		08-07-13	11:37	11-07-13	19:50	
		12-07-13	14:25	15-07-13	6:24	
		20-07-13	13:30	24-07-13	9:25	
		31-07-13	10:40	31-07-13	11:36	
		03.08.13	10:56	03.08.13	11:15	Machine came on FSNL due to grid disturbance
		07.08.13	16:30	08.08.13	20:47	Stopped due to low demand and high frequency
		09.08.13	22:15	10.08.13	12:30	
		26.08.13	12:12	26.08.13	12:18	Machine came on FSNL due to grid disturbance
		26.08.13	19:20	27.08.13	11:45	Stopped due to low demand and high frequency
		28.08.13	0:26	28.08.13	0:30	due to leakage in ACW line,GT not available
		28.08.13	0:30	28.08.13	11:45	Stopped due to low demand and high frequency
		28.08.13	11:45	28.08.13	14:00	Machine not available due to Gas Valve leakage
		28.08.13	14:00	04.09.13	15:15	Stopped due to low demand and high frequency
		17.09.13	21:31	19.09.13	09:30	
		05.10.13	21:14	05.10.13	23:02	Machine tripped due to Grid disturbance
		06.10.13	05:20	08.10.13	07:49	Stopped due to low demand and high frequency
		07.10.13	13:03	31.10.13	23:59	
		1.11.13	00:00	2.11.13	08:32	
		2.11.13	12:55	2.11.13	16:35	
		2.11.13	18:45	30.11.13	23:59	

Unit No	Capacity in MW	Outage		Synchronization		Reason of Outage
		Date	Time	Date	Time	
STG-1	30	01-04-13	0:00	01-04-13	9:15	Stopped due to low demand and high frequency
		01-04-13	9:30	01-04-13	11:10	Machine stopped due to inspection of high Vibration
		03-04-13	16:30	09-04-13	8:25	Stopped due to low demand and high frequency
		29-04-13	11:31	30-04-13	2:05	
		07-05-13	16:30	13-05-13	19:15	
		18-05-13	13:25	22-05-13	0:10	
		30-05-13	21:45	18-06-13	23:54	
		28-06-13	10:52	28-06-13	22:00	
		28-06-13	22:00	29-06-13	17:00	
		29-06-13	17:00	01-07-13	21:00	Stopped due to low demand and high frequency
		01-07-13	21:00	01-07-13	23:59	Machine not available due to problem in both BFPs.
		02-07-13	0:00	02-07-13	17:45	Stopped due to low demand and high frequency
		02-07-13	17:45	03-07-13	11:45	Machine not available due to non availability of GTs.
		03-07-13	13:15	08-07-13	10:15	Stopped due to low demand and high frequency
		12-07-13	11:50	15-07-13	13:00	
		17-07-13	11:25	18-07-13	23:15	
		20-07-13	12:10	27-07-13	21:30	
		27-07-13	21:30	28-07-13	0:12	
		28-07-13	0:12	28-07-13	1:55	
		29-07-13	13:55	29-07-13	16:00	
		31-07-13	10:40	31-07-13	13:55	Machine tripped due to grid disturbance
		31-07-13	17:30	02.08.13	13:15	Stopped due to low demand and high frequency
		02.08.13	13:15	02.08.13	18:15	Due to oil leakage from Turbine side machine taken under shut down by M-II
		02.08.13	18:15	04.08.13	12:45	Stopped due to low demand and high frequency
		06.08.13	15:29	08.08.13	22:40	
		09.08.13	1:20	25.08.13	23:59	
		28.08.13	0:30	28.08.13	3:00	Machine not available due to Non availability of GT#1 and 2
		28.08.13	3:00	28.08.13	11:45	Stopped due to low demand and high frequency
		28.08.13	11:45	28.08.13	14:10	due to leakage in ACW line,GT# 1 and 2 not available
		28.08.13	14:00	05.09.13	15:45	Stopped due to low demand and high frequency
		06.09.13	02:13	12.09.13	22:30	
		13.09.13	18:18	07.10.13	17:10	machine stopped to carry out C&I work
		10.10.13	12:12	10.10.13	13:48	
11.10.13	09:37	14.10.13	13:58			
14.10.13	21:50	16.10.13	16:58	Machine not available due to PROBLEM IN CONTROL VALVE		
23.10.13	23:15	30.11.13	23:59	Stopped due to low demand and high frequency		

Unit No	Capacity in MW	Outage		Synchronization		Reason of Outage
		Date	Time	Date	Time	
STG-2	30	01.04.13	0:00	01.04.13	11:25	Stopped due to low demand and high frequency
		16.04.13	10:40	22.04.13	11:45	
		23.04.13	12:14	23.04.13	13:09	Machine tripped due to malfunctioning of MS-14 Valve
		27.04.13	5:30	27.04.13	6:15	Machine tripped in the jerk.
		28.04.13	21:46	29.04.13	11:30	Stopped due to low demand and high frequency
		04.05.13	0:02	06.05.13	17:05	
		11.05.13	19:30	14.05.13	13:57	
		19.05.13	1:25	19.05.13	3:05	Machine Tripped on Exhaust pressure high.
		05.06.13	1:01	05.06.13	2:21	Tripped due to sudden drop in vacuum without appearing alarm in annunciation pannel.
		06.06.13	17:04	06.06.13	18:55	Machine tripped as the GT#3 & 4 came on FSNL due to tripping of 160 MVA Tx-I & II at IP Extn end.
		09.06.13	8:09	09.06.13	11:52	Machine tripped as corresponding GT came on FSNL due to tripping of 160 MVA Tr-I & II on Buchholtz relay operated .
		10.06.13	11:42	10.06.13	12:50	Machine stopped to attend
		11.06.13	12:45	12.06.13	10:35	Stopped due to low demand and high frequency
		14.06.13	8:45	17.06.13	23:45	
		23.06.13	21:35	23.06.13	23:20	Machine tripped on LLVT tank v. High Alarm
		28.06.13	9:40	28.06.13	23:15	Stopped due to low demand and high frequency
		02.07.13	12:44	02.07.13	14:25	Machine tripped due to grid disturbance.
		17.07.13	11:35	18.07.13	23:20	Stopped due to low demand and high frequency
		22.07.13	9:35	22.07.13	12:40	Machine tripped due to grid disturbance.
		27.07.13	11:07	27.07.13	23:15	Stopped due to low demand and high frequency
		28.07.13	20:07	31.07.13	3:00	
		31.07.13	10:40	31.07.13	17:24	Machine tripped due to grid disturbance.
		03.08.13	10:56	03.08.13	13:07	machine tripped due to Grid disturbance
		04.08.13	12:50	05.08.13	21:35	
		10.08.13	13:32	26.08.13	18:39	Stopped due to low demand and high frequency
		28.08.13	0:32	28.08.13	3:00	Machine not available due to Non availability of GT#3 and 4
		28.08.13	3:00	28.08.13	4:45	
		08.09.13	12:37	11.09.13	14:15	
		13.09.13	09:15	13.09.13	11:13	Stopped due to low demand and high frequency
		21.09.13	14:48	24.09.13	10:20	
03.10.13	16:55	06.10.13	09:34			

Unit No	Capacity in MW	Outage		Synchronization		Reason of Outage
		Date	Time	Date	Time	
STG-3	30	05-04-13	17:05	05-04-13	18:20	Machine stopped manually to attend oil Leakage from Secondary oil Pressure line
		28-04-13	9:34	30-04-13	4:25	Stopped due to low demand and high frequency
		03-05-13	17:41	03-05-13	19:04	Machine stopped due to problem in drum level indication and level problem.
		13-05-13	13:00	13-05-13	16:48	Tripped due to heavy jerk observed in control room.
		13-05-13	16:48	14-05-13	13:50	Stopped due to low demand and high frequency
		14-05-13	18:00	18-05-13	13:05	
		03-06-13	9:22	03-06-13	10:07	Machine tripped on Hot well very high alarm as the Control valve CD-34 left the auto and closed. Another Stream CD-37 tried to be taken into service, in the mean time machine tripped on hot well high alarm.
		06-06-13	17:04	06-06-13	18:30	Machine tripped as the GT#5 & 6 came on FSNL due to tripping of 160 MVA Tx-I & II at IP Extn end.
		09-06-13	8:09	09-06-13	8:54	Machine tripped as corresponding GT came on FSNL due to tripping of 160 MVA Tr-I & II on Buchholtz relay operated .
		09-06-13	8:54	10-06-13	10:14	Machine not taken on load due to low schedule from SLDC
		15-06-13	1:58	15-06-13	2:58	Tripped due to LLVT tank level high.
		17-06-13	12:17	17-06-13	15:12	Machine tripped due to both GTs tripped due to Tripping of 160 MVA Tx.
		02-07-13	12:44	02-07-13	14:35	Machine tripped due to grid disturbance.
		06-07-13	10:55	08-07-13	10:15	Stopped due to low demand and high frequency
		08-07-13	10:15	11-07-13	23:07	Machine stopped to attend oil leakage from Oil catcher.
		12-07-13	20:42	15-07-13	8:40	Stopped due to low demand and high frequency
		20-07-13	12:37	20-07-13	13:33	Machine tripped manually due to sticking of MS-14 valve and not opening of MS-11 and MS-13 valve.
		20-07-13	13:33	24-07-13	2:05	Stopped due to low demand and high frequency
		31-07-13	10:40	31-07-13	12:27	Machine tripped due to grid disturbance.
		03.08.13	10:56	03.08.13	12:02	Machine tripped due to Grid disturbance
		07.08.13	16:32	09.08.13	1:12	Stopped due to low demand and high frequency
		17.08.13	11:48	17.08.13	12:45	All the parameters of Turbovisiory and Electronic governor disappeared resulting tripping of steam turbine.
		26.08.13	12:12	26.08.13	13:57	Machine tripped due to Grid disturbance
		26.08.13	18:24	27.08.13	13:48	Stopped due to low demand and high frequency
		28.08.13	0:30	28.08.13	3:00	Machine not available due to Non availability of GT#5 and 6
		28.08.13	3:00	28.08.13	6:30	Stopped due to low demand and high frequency
		30.08.13	22:18	04.09.13	18:00	
		05.10.13	21:14	07.10.13	12:00	Machine tripped due to Grid disturbance and not taken on load due to less demand
		07.10.13	12:00	02.11.13	23:59	Machine not available due to problem in control valve
		02.11.13	18:50	30.11.13	23:59	Stopped due to low demand and high frequency

## (C) PRAGATI STATION

Unit No	Capacity in MW	Outage		Synchronization		Reason of Outage
		Date	Time	Date	Time	
1	104	23.05.13	14.29	23.05.13	14.56	Tripped due to Gas Fuel Pr. Low by GAIL.
		15.06.13	21.55	17.06.13	9.00	No schedule to run GT#1 on Open Cycle.
		17.06.13	9.00	24.06.13	0.26	Tripped on internal fault
		25.06.13	22.00	26.06.13	2.00	
		26.06.13	2.00	26.06.13	13.42	No schedule of GT#1 in OC due to low demand, HRSG#1 not available-FW104 stuck
		09.07.13	19.03	09.07.13	19.50	Tripped on internal fault
		22.07.13	10.43	22.07.13	12.26	Tripped due to Grid Disturbance
		23.07.13	16.28	23.07.13	19.29	Tripped on internal fault
		03.09.13	13.10	03.09.13	14.14	
		28.09.13	06.01	29.09.13	16.30	Stopped to attend generation winding temprature.
		14.10.13	12.22	14.10.13	12.49	Tripped on internal fault
17.10.13	12.39	17.10.13	13.47			

Unit No	Capacity in MW	Outage		Synchronization		Reason of Outage
		Date	Time	Date	Time	
2	104	21.04.13	8.15	21.04.13	18.15	Stopped by DTL to attend hot spot.
		21.04.13	18.15	23.04.13	6.31	Tripped on internal fault
		26.04.13	6.45	26.04.13	8.37	
		14.05.13	13.28	14.05.13	14.13	
		06.06.13	17.10	06.06.13	18.05	Tripped due to Grid Disturbance
		01.07.13	16.02	01.07.13	17.40	Tripped on internal fault
		02.07.13	12.54	02.07.13	13.55	Tripped due to Grid Disturbance
		08.07.13	11.37	08.07.13	12.48	Tripped on internal fault
		22.07.13	10.43	22.07.13	11.52	Tripped due to Grid Disturbance
		03.08.13	10.57	03.08.13	11.08	Tripped due to Grid Disturbance
		15.08.13	10.48	16.08.13	16.31	Stopped due to low demand and high frequency
		26.08.13	12.15	26.08.13	12.26	Tripped due to Grid Disturbance
		28.08.13	6.07	29.08.13	8.53	Stopped due to low demand and high frequency
		29.08.13	20.40	29.08.13	22.30	Tripped on internal fault
		24.09.13	02.34	24.09.13	09.44	Tripped due to grid disturbance
		05.10.13	21.17	05.10.13	22.05	
15.10.13	13.06	19.10.13	12.19	Tripped on internal fault		



Unit No	Capacity in MW	Outage		Synchronization		Reason of Outage
		Date	Time	Date	Time	
STG	122	17.04.13	18.37	17.04.13	19.52	Tripped on internal fault
		21.04.13	11.44	21.04.13	14.15	
		21.04.13	14.15	21.04.13	18.36	Shut down contineued by DTL to attend hot spot.
		06.06.13	17.10	06.06.13	18.50	Tripped due to Grid Distrubance
		02.07.13	12.54	02.07.13	15.02	
		09.07.13	19.03	09.07.13	20.15	Tripped on internal fault
		22.07.13	10.43	22.07.13	15.53	Tripped due to Grid Distrubance
		23.07.13	16.28	23.07.13	17.42	Tripped on internal fault
		03.08.13	10.57	03.08.13	11.47	Tripped due to Grid Distrubance
		26.08.13	12.15	26.08.13	13.35	Tripped due to Grid Distrubance
		29.08.13	20.45	29.08.13	22.52	
		03.09.13	13.18	03.09.13	14.25	Tripped on internal fault
		10.09.13	00.34	10.09.13	01.32	
		05.10.13	21.17	05.10.13	23.30	Tripped due to Grid Distrubance
		07.10.13	18.55	10.10.13	09.03	Tripped on internal fault
		17.10.13	12.39	17.10.13	14.31	

(D) **BADARPUR THERMAL POWER STATION**

Unit	Capacity in MW	Outage		Synchronization		Reason of Outage
		Date	Time	Date	Time	
1	95	01.04.13	0:00	01.04.13	19:18	Reserve Shutdown
		12.05.13	18:18	12.05.13	21:20	Grid Disturbance
		04.06.13	22:45	05.06.13	23:45	Water Wall tube leakage
		13.06.13	10:58	13.06.13	11:32	Furnace Disturbance
		16.06.13	18:38	21.06.13	14:14	
		09.07.13	20:41	15.07.13	2400	Reserve Shutdown
		19.07.13	3:28	20.07.13	18:14	
		26.07.13	14:36	29.07.13	16:00	
		10.08.13	15:12	10.08.13	16:00	
		10.08.13	17:11	10.08.13	23:15	Furnace Disturbance
		10.08.13	23:15	14.09.13	21.06	Stopped due to low demand and high frequency
		17.09.13	03:13	17.09.13	04:06	
		22.09.13	14:00	22.09.13	15:08	
		22.09.13	23:52	23.09.13	01:00	Furnace Disturbance
		23.09.13	01:00	23.09.13	21:00	Platen Superheater leakage
		23.09.13	21:00	22.10.13	12.54	Stopped due to low demand and high frequency
		09.11.13	22:34	25.11.13	02:15	Reserve S/D
28.11.13	23:57	30.11.13	23:59	Reserve S/D		

Unit	Capacity in MW	Outage		Synchronization		Reason of Outage
		Date	Time	Date	Time	
2	95	12.05.13	18:18	12.05.13	20:07	Grid Disturbance
		28.06.13	10:32	28.07.13	9:56	
		08.08.13	11:01	10.08.13	22:09	Reserve Shutdown
		23.08.13	13:14	23.08.13	14:15	Furnace Disturbance
		21.09.13	19:57	23.09.13	19:49	Stopped due to low demand and high frequency
		02.10.13	07:50	02.10.13	08:40	
		02.10.13	09:21	02.10.13	10:01	Furnace Disturbance
		02.10.13	11:07	04.10.13	00:12	Superheater leakage
		04.11.13	19:52	24.11.13	20:50	Reserve S/D
		28.11.13	09:16	28.11.13	14:23	GT Overall Differential

Unit	Capacity in MW	Outage		Synchronization		Reason of Outage
		Date	Time	Date	Time	
3	95	03.04.13	19:55	22.04.13	13:40	Planned Shutdown
		12.05.13	18:18	12.05.13	20:20	Grid Disturbance
		26.05.13	12:41	27.05.13	12:58	Economiser Tube leakage
		13.06.13	10:40	18.06.13	12:04	Reserve Shutdown
		04.07.13	5:45	04.07.13	7:06	Furnace Disturbance
		18.07.13	11:39	19.07.13	2:48	Reserve Shutdown
		01.08.13	21:28	02.08.13	13:43	Water Wall tube leakage
		03.08.13	3:45	03.08.13	6:14	
		03.08.13	17:10	03.08.13	18:02	
		06.08.13	11:15	06.08.13	11:56	Furnace Disturbance
		07.08.13	11:40	15.09.13	07:21	Reserve Shutdown
		19.09.13	05:19	19.09.13	06:50	
		19.09.13	21:01	19.09.13	21:42	
		28.09.13	10:05	28.09.13	19:22	Furnace Disturbance
		02.10.13	00:08	03.10.13	05:28	Reserve S/D
		08.10.13	19:16	08.10.13	20:32	Furnace Disturbance
		09.10.13	22:20	10.10.13	00:49	HT motor problem- feed pump drive
		11.10.13	17:15	16.10.13	18:40	Reserve S/D
		22.10.13	14:04	22.10.13	14:42	
		31.10.13	21:22	31.10.13	22:03	Furnace Disturbance
		10.11.13	10:13	10.11.13	11:22	Furnace Disturbance
		18.11.13	05:40	18.11.13	06:35	Furnace Disturbance
18.11.13	18:38	18.11.13	19:48	Furnace Disturbance		
21.11.13	06:39	21.11.13	07:21	Furnace Disturbance		
22.11.13	00:05	30.11.13	23:59	Reserve S/D		

Unit	Capacity in MW	Outage		Synchronization		Reason of Outage
		Date	Time	Date	Time	
4	210	09.04.13	22:17	10.04.13	2:07	MDBFP relay malfunction
		12.05.13	18:18	12.05.13	21:35	Grid Disturbance
		25.05.13	7:28	23.05.13	15:34	UAT 4A diff relay casing shorted
		11.06.13	15:35	13.06.13	07:48	Reserve Shutdown
		10.08.13	10:24	10.08.13	13:40	AVR & Excitation system
		14.09.13	04:34	15.09.13	23:01	Water Wall tube leakage
		25.11.13	03:58	28.11.13	11:07	ID Fan 4B impeller shaft replaced

Unit	Capacity in MW	Outage		Synchronization		Reason of Outage
		Date	Time	Date	Time	
5	210	09.05.13	0:06	09.05.13	15:57	APH 5B NDE Bearing vibration high
		11.05.13	19:48	14.05.13	12:17	Reserve Shutdown
		16.06.13	15:58	16.06.13	17:09	CW Shortage
		24.06.13	16:23	24.06.13	17:45	Furnace Disturbance
		24.06.13	18:04	24.06.13	19:03	
		27.06.13	14:20	27.06.13	18:31	AVR & Excitation System
		04.07.13	0:12	04.07.13	1:15	Furnace Disturbance
		27.07.13	19:16	30.07.13	1:24	Steam Cooled W/Wall leakage
		01.08.13	20:43	02.08.13	18:30	Drum manhole leakage
		14.08.13	19:00	15.08.13	10:15	Water Wall tube leakage
		15.08.13	10:15	16.08.13	7:13	Reserve S/D
		04.09.13	13:23	06.09.13	09:11	Water Wall tube leakage
		06.09.13	13:39	07.09.13	21:32	Economiser Tube leakage
		04.10.13	14:37	05.10.13	17:55	Reserve S/D
		07.10.13	03:48	08.10.13	23:48	3.3/6.6/11KV Bus breaker problem
		23.10.13	00:50	20.11.13	18:42	Planned shutdown
21.11.13	08:00	21.11.13	19:35	Main GT Transformer		

(E) **BAWANA CCGT POWER STATION**

Unit	Capacity in MW	Outage		Synchronization		Reason of Outage
		Date	Time	Date	Time	
1	216	01.04.13	00:00	01.04.13	8:39	Combustion inspection
		05.04.13	10:55	21.04.13	23:59	M/C under planned shut down due to CW interconnection/CW sump cleaning/Diverter Damper setting
		19.06.13	00:26	19.06.13	02:42	G.T. -1 tripped due to Hot gas temp high.
		20.06.13	20:42	05.08.13	09:10	Stopped due to low demand and high frequency
		19.08.13	14:27	26.08.13	11:54	Stopped due to low demand and high frequency
		25.09.13	12:05	30.11.13	23:59	

Unit	Capacity in MW	Outage		Synchronization		Reason of Outage
		Date	Time	Date	Time	
2	216	05.04.13	13:13	12.04.13	19:02	M/C under planned shut down due to CW interconnection/CW sump cleaning/Diverter Damper setting up to 12.04.13
		14.04.13	13:40	25.04.13	08:57	Stopped due to low demand and high frequency
		29.04.13	22:25	30.04.13	06:25	M/C Stopped due to gas leakage in pipe line
		07.05.13	20:38	08.05.13	0:26	CW Pump Motor Failure
		29.05.13	13:57	29.05.13	15:30	GT#2 tripped on EPB press by default
		03.06.13	10:54	03.06.13	13:53	GT #2 tripped due to its rotor earth fault
		06.06.13	22:50	10.06.13	12:38	Stopped due to low demand and high frequency
		13.06.13	08:14	20.06.13	18:33	Stopped due to low demand and high frequency
		21.06.13	08:21	21.06.13	12:54	GT #2 tripped due to difference in G-1 feedback
		30.06.13	14:16	30.06.13	14:58	GT#2 Tripped on Excitation tripping
		12.07.13	15:00	03.10.13	13:22	Stopped due to low demand and high frequency
		03.10.13	16:07	07.10.13	14:48	
		10.10.13	15:56	10.10.13	17:10	Tripped due to isolation of LPC 02
11.10.13	10:40	30.11.13	23:59			

Unit	Capacity in MW	Outage		Synchronization		Reason of Outage
		Date	Time	Date	Time	
3	216	28.10.13	00:00	30.11.13	23:59	Commissioned on 28.10.13 and Stopped due to low demand and high frequency

Unit	Capacity in MW	Outage		Synchronization		Reason of Outage
		Date	Time	Date	Time	
STG	254	01.04.13	0:00	27.04.13	19:19	M/C under planned shut down due to CW interconnection/CW sump cleaning/Diverter Damper setting up to 12.04.13 after force shutdown due to bearing failure of turbine up to 25.04.13 and 25.04.13 to 27.04.13 due to generator IR value low
		29.04.13	22:25	30.04.13	6:25	M/C Stopped due to gas leakage in pipe line
		30.04.13	22:07	30.04.13	23:37	GT#2 Diverted damper is closed
		07.05.13	20:35	08.05.13	3:12	CW Pump A Motor Failure
		08.05.13	11:57	08.05.13	13:19	CW Pump B Motor winding temperature increased up to threshold limit
		29.05.13	13:57	29.05.13	16:50	STG trip on GT trip
		03.06.13	10:54	03.06.13	15:57	
		06.06.13	22:50	10.06.13	17:50	Stopped due to low demand and high frequency
		13.06.13	08:16	19.06.13	09:10	
		21.06.13	08:21	21.06.13	13:00	STG trip on GT trip
		27.06.13	18:01	27.06.13	18:42	GT#2 Diverted damper is closed
		29.06.13	17:31	29.06.13	18:29	CW Pump B Discharge valve closed
		30.06.13	14:16	30.06.13	15:34	STG trip on GT trip
		12.07.13	15:00	05.08.13	11:58	Stopped due to low demand and high frequency
		19.08.13	14:29	26.08.13	17:41	
		31.08.13	12:52	31.08.13	14:12	STG tripped on internal fault
		25.09.13	12:00	07.10.13	20:20	Stopped due to low demand and high frequency
10.10.13	15:56	10.10.13	18:06	Tripped due to tripping of GT-2		
11.10.13	10:50	30.11.13	23:59			

(E) RITHALA POWER STATION

Unit	Capacity in MW	Outage		Synchronization		Reason of Outage
		Date	Time	Date	Time	
1	31.8	19.03.13	17:32	30.11.13	23:59	No schedule have been given by SLDC on Spot gas

Unit	Capacity in MW	Outage		Synchronization		Reason of Outage
		Date	Time	Date	Time	
2	31.8	05.03.13	15:38	07.06.13	12:05	No schedule have been given by SLDC on Spot gas Gas turbine taken on spot )
		07.06.13	22:41	30.11.13	23:59	No schedule have been given by SLDC on Spot gas

Unit	Capacity in MW	Outage		Synchronization		Reason of Outage
		Date	Time	Date	Time	
STG	31.8	27.02.13	00:01	07.06.13	17:40	No schedule have been given by SLDC on Spot gas
		07.06.13	22:38	30.11.13	23:59	No schedule have been given by SLDC on Spot gas

4

**ALLOCATION OF POWER TO DELHI**

A)

**Allocation of power to Delhi from Unallocated quota of Central Sector Generating Stations to Delhi w.e.f. 19.01.2013****Time block 00.00hrs. to 24.00hrs. @ 0% allocation from Unallocated Quota**

Name of the Stn	Installed capacity	Total Un-allocated	Basic Allocation	Basic Allocation at periphery	Allocation out of Unallocated Quota	Allocation out of Un-allocated Quota at Delhi periphery	Total allocation at Delhi periphery
1	2	3	4	5	6	7	(8)=(5)+(7)
<b>NTPC STATIONS</b>							
Singrauli STPS	2000	300	150	130	0	0	130
Rihand-I	1000	150	100	87	0	0	87
Rihand Stage -II	1000	150	126	109	0	0	109
Rihand Stage -III	500	75	66	57	0	0	57
ANTA GPS	419	63	44	41	0	0	41
Auriya GPS	663.36	99	72	67	0	0	67
Dadri GPS	829.78	129	91	85	0	0	85
Dadri NCTPS (Th)	840	0	756	657	0	0	657
Dadri NCTPS (Th) Stage-II	980	147	735	639	0	0	639
Unchahaar-I TPS	420	20	24	21	0	0	21
Unchahaar-II TPS	420	63	47	41	0	0	41
Unchahaar-III TPS	210	31	29	25	0	0	25
<b>TOTAL</b>	<b>9282</b>	<b>1227</b>	<b>2240</b>	<b>1959</b>	<b>0</b>	<b>0</b>	<b>1959</b>
<b>NHPC</b>							
Baira Suil HPS	180	0	20	19	0	0	19
Salal HPS	690	0	80	76	0	0	76
Tanakpur HEP	94	0	12	11	0	0	11
Chamera HEP	540	0	43	41	0	0	41
Chamera-II HEP	300	54	40	38	0	0	38
Chamera-III HEP	231	35	29	28	0	0	28
URI HEP	480	0	53	50	0	0	50
Sewa HEP	120	18	16	15	0	0	15
Dhaulti Ganga HEP	280	42	37	35	0	0	35
Dulhasti HEP	390	58	50	48	0	0	48
<b>TOTAL</b>	<b>3305</b>	<b>206</b>	<b>380</b>	<b>361</b>	<b>0</b>	<b>0</b>	<b>361</b>
<b>NPC</b>							
Narora APS	440	64	47	41	0	0	41
RAPP(B)	440	66	0	0	0	0	0
RAPP (C )	440	64	56	49	0	0	49
<b>TOTAL</b>	<b>1320</b>	<b>194</b>	<b>103</b>	<b>89</b>	<b>0</b>	<b>0</b>	<b>89</b>
<b>SVJNL</b>							
Nathpa Jhakri HEP	1500	149	142	123	0	0	123
<b>THDC</b>							
Tehri Hydro	1000	99	103	89	0	0	89
Koteshwar HEP	400	40	39	37	0	0	37
<b>TOTAL</b>	<b>1400</b>	<b>139</b>	<b>142</b>	<b>127</b>	<b>0</b>	<b>0</b>	<b>127</b>
<b>Total</b>	<b>16807</b>	<b>1915</b>	<b>3007</b>	<b>2660</b>	<b>0</b>	<b>0</b>	<b>2660</b>
<b>Allocation from ER and Tala HEP</b>							
Farakka	1600	0	22	19	0	0	19
Kahalgaon	840	0	51	43	0	0	43
Talchar	1000	0	0	0	0	0	0
Tala HEP	1020	153	30	25	0	0	25
Mejia TPS Unit-6	250	0	29	25	0	0	25
Kahalgaon-II	1500	0	157	131	0	0	131
<b>Total ER</b>	<b>6210</b>	<b>153</b>	<b>290</b>	<b>242</b>	<b>0</b>	<b>0</b>	<b>242</b>
<b>Joint Venture</b>							
Jhajjar TPS	1000	76	231	201	0	0	201
<b>Grand Total</b>	<b>24017</b>	<b>2144</b>	<b>3528</b>	<b>3102</b>	<b>0</b>	<b>0</b>	<b>3102</b>

**B) Allocation of power to Delhi from Unallocated quota of Central Sector Generating Stations to Delhi w.e.f. 01.08.2013**

**Time block 00.00hrs. to 24.00hrs. @ 0% allocation from Unallocated Quota**

Name of the Stn	Installed capacity	Total Un-allocated	Basic Allocation	Basic Allocation at periphery	Allocation out of Unallocated Quota	Allocation out of Un-allocated Quota at Delhi periphery	Total allocation at Delhi periphery
1	2	3	4	5	6	7	(8)=(5)+(7)
<b>NTPC STATIONS</b>							
Singrauli STPS	2000	300	150	130	0	0	130
Rihand-I	1000	150	100	87	0	0	87
Rihand Stage -II	1000	150	126	109	0	0	109
Rihand Stage -III	500	75	66	57	0	0	57
ANTA GPS	419	63	44	41	0	0	41
Auriya GPS	663.36	99	72	67	0	0	67
Dadri GPS	829.78	129	91	85	0	0	85
Dadri NCTPS (Th)	840	0	756	657	0	0	657
Dadri NCTPS (Th) Stage-II	980	147	735	639	0	0	639
Unchahaar-I TPS	420	20	24	21	0	0	21
Unchahaar-II TPS	420	63	47	41	0	0	41
Unchahaar-III TPS	210	31	29	25	0	0	25
<b>TOTAL</b>	<b>9282</b>	<b>1227</b>	<b>2240</b>	<b>1959</b>	<b>0</b>	<b>0</b>	<b>1959</b>
<b>NHPC</b>							
Baira Suil HPS	180	0	20	19	0	0	19
Salal HPS	690	0	80	76	0	0	76
Tanakpur HEP	94	0	12	11	0	0	11
Chamera HEP	540	0	43	41	0	0	41
Chamera-II HEP	300	54	40	38	0	0	38
Chamera-III HEP	231	35	29	28	0	0	28
URI HEP	480	0	53	50	0	0	50
Sewa HEP	120	18	16	15	0	0	15
Dhauri Ganga HEP	280	42	37	35	0	0	35
Dulhasti HEP	390	58	50	48	0	0	48
<b>TOTAL</b>	<b>3305</b>	<b>206</b>	<b>380</b>	<b>361</b>	<b>0</b>	<b>0</b>	<b>361</b>
<b>NPC</b>							
Narora APS	440	64	47	41	0	0	41
RAPP(B)	440	66	0	0	0	0	0
RAPP (C )	440	64	56	49	0	0	49
<b>TOTAL</b>	<b>1320</b>	<b>194</b>	<b>103</b>	<b>89</b>	<b>0</b>	<b>0</b>	<b>89</b>
<b>SVJNL</b>							
Nathpa Jhakri HEP	1500	149	142	123	0	0	123
<b>THDC</b>							
Tehri Hydro	1000	99	103	89	0	0	89
Koteshwar HEP	400	40	39	37	0	0	37
<b>TOTAL</b>	<b>1400</b>	<b>139</b>	<b>142</b>	<b>127</b>	<b>0</b>	<b>0</b>	<b>127</b>
<b>Total</b>	<b>16807</b>	<b>1915</b>	<b>3007</b>	<b>2660</b>	<b>0</b>	<b>0</b>	<b>2660</b>
<b>Allocation from ER and Tala HEP</b>							
Farakka	1600	0	22	19	0	0	19
Kahalgaon	840	0	51	43	0	0	43
Talchar	1000	0	0	0	0	0	0
Tala HEP	1020	153	30	25	0	0	25
Meija TPS Unit-6	250	0	29	25	0	0	25
Kahalgaon-II	1500	0	157	131	0	0	131
<b>Total ER</b>	<b>6210</b>	<b>153</b>	<b>290</b>	<b>242</b>	<b>0</b>	<b>0</b>	<b>242</b>
<b>Joint Venture</b>							
Jhajjar TPS	1500	114	377	327	0	0	327
<b>Grand Total</b>	<b>24517</b>	<b>2182</b>	<b>3674</b>	<b>3229</b>	<b>0</b>	<b>0</b>	<b>3229</b>

C) **Allocation of power to Delhi from Unallocated quota of Central Sector Generating Stations to Delhi w.e.f. 11.10.2013**

**Time block 00.00hrs. to 24.00hrs. @ 0% allocation from Unallocated Quota**

Name of the Stn	Installed capacity	Total Un-allocated	Basic Allocation	Basic Allocation at periphery	Allocation out of Unallocated Quota	Allocation out of Un-allocated Quota at Delhi periphery	Total allocation at Delhi periphery
1	2	3	4	5	6	7	(8)=(5)+(7)
<b>NTPC STATIONS</b>							
Singrauli STPS	2000	300	150	130	0	0	130
Rihand-I	1000	150	100	87	0	0	87
Rihand Stage -II	1000	150	126	109	0	0	109
Rihand Stage -III	500	75	66	57	0	0	57
ANTA GPS	419	63	44	41	0	0	41
Auriya GPS	663.36	99	72	67	0	0	67
Dadri GPS	829.78	129	91	85	0	0	85
Dadri NCTPS (Th)	840	0	756	657	0	0	657
Dadri NCTPS (Th) Stage-II	980	147	735	639	0	0	639
Unchahaar-I TPS	420	20	24	21	0	0	21
Unchahaar-II TPS	420	63	47	41	0	0	41
Unchahaar-III TPS	210	31	29	25	0	0	25
<b>TOTAL</b>	<b>9282</b>	<b>1227</b>	<b>2240</b>	<b>1959</b>	<b>0</b>	<b>0</b>	<b>1959</b>
<b>NHPC</b>							
Baira Suil HPS	180	0	20	19	0	0	19
Salal HPS	690	0	80	76	0	0	76
Tanakpur HEP	94	0	12	11	0	0	11
Chamera HEP	540	0	43	41	0	0	41
Chamera-II HEP	300	54	40	38	0	0	38
Chamera-III HEP	231	35	29	28	0	0	28
URI HEP-I	480	0	53	50	0	0	50
URI HEP-II	120	18	16	15	0	0	15
Sewa HEP	120	18	16	15	0	0	15
Dhauri Ganga HEP	280	42	37	35	0	0	35
Dulhasti HEP	390	58	50	48	0	0	48
<b>TOTAL</b>	<b>3425</b>	<b>224</b>	<b>396</b>	<b>377</b>	<b>0</b>	<b>0</b>	<b>377</b>
<b>NPC</b>							
Narora APS	440	64	47	41	0	0	41
RAPP (C )	440	64	56	49	0	0	49
<b>TOTAL</b>	<b>880</b>	<b>128</b>	<b>103</b>	<b>89</b>	<b>0</b>	<b>0</b>	<b>89</b>
<b>SVJNL</b>							
Nathpa Jhakri HEP	1500	149	142	135	0	0	135
<b>THDC</b>							
Tehri Hydro	1000	99	103	98	0	0	98
Koteshwar HEP	400	40	39	37	0	0	37
<b>TOTAL</b>	<b>1400</b>	<b>139</b>	<b>142</b>	<b>135</b>	<b>0</b>	<b>0</b>	<b>135</b>
<b>Total</b>	<b>16487</b>	<b>1867</b>	<b>3023</b>	<b>2695</b>	<b>0</b>	<b>0</b>	<b>2695</b>
<b>Allocation from ER and Tala HEP</b>							
Farakka	1600	0	22	19	0	0	19
Kahalgaon	840	0	51	43	0	0	43
Tala HEP	1020	153	30	25	0	0	25
Kahalgaon-II	1500	0	157	131	0	0	131
<b>Total ER</b>	<b>4960</b>	<b>153</b>	<b>261</b>	<b>217</b>	<b>0</b>	<b>0</b>	<b>217</b>
<b>Joint Venture</b>							
Jhajjar TPS	1500	114	377	327	0	0	327
<b>Grand Total</b>	<b>22947</b>	<b>2134</b>	<b>3661</b>	<b>3240</b>	<b>0</b>	<b>0</b>	<b>3240</b>



**D) Allocation of power to Delhi from Unallocated quota of Central Sector Generating Stations to Delhi w.e.f. 19.11.2013**

**Time block 00.00hrs. to 24.00hrs. @ 0% allocation from Unallocated Quota**

Name of the Stn	Installed capacity	Total Un-allocated	Basic Allocation	Basic Allocation at periphery	Allocation out of Unallocated Quota	Allocation out of Un-allocated Quota at Delhi periphery	Total allocation at Delhi periphery
1	2	3	4	5	6	7	(8)=(5)+(7)
<b><u>NTPC STATIONS</u></b>							
Singrauli STPS	2000	300	150	130	0	0	130
Rihand-I	1000	150	100	87	0	0	87
Rihand Stage -II	1000	150	126	109	0	0	109
Rihand Stage -III	500	75	66	57	0	0	57
ANTA GPS	419	63	44	41	0	0	41
Auriya GPS	663.36	99	72	67	0	0	67
Dadri GPS	829.78	129	91	85	0	0	85
Dadri NCTPS (Th)	840	0	756	657	0	0	657
Dadri NCTPS (Th) Stage-II	980	147	735	639	0	0	639
Unchahaar-I TPS	420	20	24	21	0	0	21
Unchahaar-II TPS	420	63	47	41	0	0	41
Unchahaar-III TPS	210	31	29	25	0	0	25
<b>TOTAL</b>	<b>9282</b>	<b>1227</b>	<b>2240</b>	<b>1959</b>	<b>0</b>	<b>0</b>	<b>1959</b>
<b><u>NHPC</u></b>							
Baira Suil HPS	180	0	20	19	0	0	19
Salal HPS	690	0	80	76	0	0	76
Tanakpur HEP	94	0	12	11	0	0	11
Chamera HEP	540	0	43	41	0	0	41
Chamera-II HEP	300	54	40	38	0	0	38
Chamera-III HEP	231	35	29	28	0	0	28
URI HEP	480	0	53	50	0	0	50
Sewa HEP	120	18	16	15	0	0	15
Dhauri Ganga HEP	280	42	37	35	0	0	35
Dulhasti HEP	390	58	50	48	0	0	48
<b>TOTAL</b>	<b>3305</b>	<b>206</b>	<b>380</b>	<b>361</b>	<b>0</b>	<b>0</b>	<b>361</b>
<b><u>NPC</u></b>							
Narora APS	440	64	47	41	0	0	41
RAPP(B)	440	66	0	0	0	0	0
RAPP (C )	440	64	56	49	0	0	49
<b>TOTAL</b>	<b>1320</b>	<b>194</b>	<b>103</b>	<b>89</b>	<b>0</b>	<b>0</b>	<b>89</b>
<b><u>SVJNL</u></b>							
Nathpa Jhakri HEP	1500	149	142	123	0	0	123
<b><u>THDC</u></b>							
Tehri Hydro	1000	99	103	89	0	0	89
Koteshwar HEP	400	40	39	37	0	0	37
<b>TOTAL</b>	<b>1400</b>	<b>139</b>	<b>142</b>	<b>127</b>	<b>0</b>	<b>0</b>	<b>127</b>
<b>Total</b>	<b>16807</b>	<b>1915</b>	<b>3007</b>	<b>2660</b>	<b>0</b>	<b>0</b>	<b>2660</b>
<b><u>Allocation from ER and Tala HEP</u></b>							
Farakka	1600	0	22	19	0	0	19
Kahalgaon	840	0	51	43	0	0	43
Talchar	1000	0	0	0	0	0	0
Tala HEP	1020	153	30	25	0	0	25
Mejia TPS Unit-6	250	0	29	25	0	0	25
Kahalgaon-II	1500	0	157	131	0	0	131
<b>Total ER</b>	<b>6210</b>	<b>153</b>	<b>290</b>	<b>242</b>	<b>0</b>	<b>0</b>	<b>242</b>
<b><u>Joint Venture</u></b>							
Jhajjar TPS	1500	114	377	327	0	0	327
<b>Grand Total</b>	<b>24517</b>	<b>2182</b>	<b>3674</b>	<b>3229</b>	<b>0</b>	<b>0</b>	<b>3229</b>

## 5 ALLOCATION OF POWER TO DISCOMS

A) ALLOCATION OF POWER TO VARIOUS LICENCEES AS PER ORDER OF DERC AND DECISION OF GNCTD FOR ALLOCATION OF CENTRAL SECTOR STATIONS (DADRI THERMAL & BTPS) AND STATE SECTOR GENERATING STATIONS w.e.f. 01.04.2011.

(Allocation In %)

### (A) 10.00hrs. to 17.00hrs.

SOURCES	LICENSEES					
	NDMC	MES	NDPL	BRPL	BYPL	TOTAL
1. Central Sector without Dadri (Th)	0.00	0.00	29.18	43.58	27.24	100.00
2. Dadri (Th)	14.98	0.00	24.18	36.87	23.97	100.00
3. BTPS	15.94	7.09	21.88	33.37	21.72	100.00
4. RPH	0.85	0.00	28.39	42.97	27.79	100.00
5. GT	0.93	0.00	28.28	42.99	27.80	100.00
6. Pragati	26.69	0.00	20.77	31.76	20.7	100.00
7. DVC	0.00	0.00	29.18	43.58	27.24	100.00
8. BAWANA CCGT*	7.30	1.82	20.688	30.888	19.304	80.00

### (B) 00.00hrs. to 10.00hrs. and 17.00hrs. to 24.00hrs.

SOURCES	LICENSEES					
	NDMC	MES	NDPL	BRPL	BYPL	TOTAL
1. Central Sector without Dadri (Th)	0.00	0.00	29.18	43.58	27.24	100.00
2. Dadri (Th)	14.05	0.00	24.18	36.87	24.90	100.00
3. BTPS	15.07	7.09	21.88	33.37	22.59	100.00
4. RPH	0.00	0.00	28.39	42.97	28.64	100.00
5. GT	0.00	0.00	28.28	42.99	28.73	100.00
6. Pragati	25.76	0.00	20.77	31.76	21.71	100.00
7. DVC	0.00	0.00	29.18	43.58	27.24	100.00
8. BAWANA CCGT*	7.30	1.82	20.688	30.888	19.304	80.00

\* 20% POWER OF BAWANA CCGT ALLOCATED TO HARYANA (10%) & PUNJAB (10%)

**B) ALLOCATION OF POWER TO VARIOUS LICENCEES AS PER ORDER OF DERC AND DECISION OF GNCTD FOR ALLOCATION OF CENTRAL SECTOR STATIONS (DADRI THERMAL & BTPS) AND STATE SECTOR GENERATING STATIONS w.e.f. 06.08.2013.**

**(Allocation In %)**

**(A) 10.00hrs. to 17.00hrs.**

SOURCES	LICENSEES					
	NDMC	MES	NDPL	BRPL	BYPL	TOTAL
1. Central Sector without Dadri (Th)	0	0	29.18	43.58	27.24	100.00
2. Dadri (Th)	16.63	0	24.22	36.86	22.39	100.00
3. BTPS	17.73	7.09	21.81	33.2	20.17	100.00
4. RPH	0	0	29.025	44.133	26.842	100.00
5. GT	0	0	29.02	44.16	26.82	100.00
6. Pragati	30.3	0	20.22	30.78	18.7	100.00
7. DVC	0	0	29.18	43.58	27.24	100.00
8. BAWANA CCGT*	7.30	1.82	20.688	30.888	19.304	80.00

**(B) 00.00hrs. to 10.00hrs. and 17.00hrs. to 24.00hrs.**

SOURCES	LICENSEES					
	NDMC	MES	NDPL	BRPL	BYPL	TOTAL
1. Central Sector without Dadri (Th)	0	0	29.18	43.58	27.24	100.00
2. Dadri (Th)	16.53	0	24.22	36.86	22.39	100.00
3. BTPS	17.73	7.09	21.81	33.2	20.17	100.00
4. RPH	0	0	29.025	44.133	26.842	100.00
5. GT	0	0	29.02	44.16	26.82	100.00
6. Pragati	30.3	0	20.22	30.78	18.7	100.00
7. DVC	0	0	29.18	43.58	27.24	100.00
8. BAWANA CCGT*	7.30	1.82	20.688	30.888	19.304	80.00

\* 20% POWER OF BAWANA CCGT ALLOCATED TO HARYANA (10%) & PUNJAB (10%)

## 6 POWER AVAILABILITY-DEMAND POSITION AT THE TIME OF PEAK DEMAND MET DURING NOVEMBER 2013

All figures in MW

Date	Time of peak demand	Generation within Delhi								Import from the Grid	Schedule from the Grid	OD(-)/UD(+)	Demand met	Shedding	Un-Restricted Demand
		RPH	GT	PPCL	Rithala	Bawana	Towmcl	BTPS	Total						
(1)	(2)	(3)	(4)	(5)	(6)	(7)	(8)	(9)= (3) to (8)	(10)	(11)	(12)= (11) - (10)	(13)= (11)+ (12)	(14)	(15)= (13)+ (14)	
1	18.37.51	54	79	304	0	-4	15	377	825	2751	2902	-151	3576	0	3576
2	18.46.39	54	119	261	0	-4	13	345	788	2477	2691	-214	3265	0	3265
3	18.39.26	54	79	304	0	-4	15	377	825	2128	2156	-28	2953	1	2954
4	18.50.16	0	83	266	0	-2	12	344	703	2133	2342	-209	2836	0	2836
5	18.38.54	0	83	262	0	-2	18	306	667	2334	2327	7	3001	0	3001
6	18.44.45	0	84	266	0	-1	16	310	675	2557	2497	60	3232	0	3232
7	18.32.03	0	84	264	0	-2	15	338	699	2596	2557	39	3295	3	3298
8	18.34.58	0	84	313	0	-2	18	342	755	2398	2606	-208	3153	0	3153
9	18.27.43	0	83	264	0	-1	16	393	755	2351	2475	-124	3106	0	3106
10	18.33.27	0	84	264	0	-2	9	245	600	2300	2386	-86	2900	0	2900
11	18.22.48	0	82	311	0	-2	16	246	653	2600	2501	99	3253	0	3253
12	18.31.52	0	85	266	0	-1	16	248	614	2579	2433	146	3193	0	3193
13	18.30.17	0	84	314	0	-1	17	259	673	2450	2561	-111	3123	0	3123
14	18.25.40	0	83	312	0	-1	16	271	681	2523	2422	101	3204	0	3204
15	11.50.16	0	85	319	0	-1	16	256	675	2534	2079	455	3209	0	3209
16	18.38.23	0	84	317	0	-1	16	257	673	2360	2278	82	3033	0	3033
17	18.41.11	0	81	316	0	-1	18	215	629	2450	2347	103	3079	0	3079
18	18.39.35	0	83	313	0	-1	16	225	636	2570	2445	125	3206	0	3206
19	18.37.04	0	82	313	0	-1	13	264	671	2525	2588	-63	3196	0	3196
20	18.30.22	0	83	312	0	-2	15	253	661	2502	2385	117	3163	2	3165
21	18.19.00	0	83	312	0	-1	14	250	658	2534	2473	61	3192	0	3192
22	10.14.49	0	83	315	0	-2	16	368	780	2481	2156	325	3261	64	3325
23	18.18.31	0	82	311	0	-3	10	367	767	2285	2395	-110	3052	2	3054
24	10.44.12	0	83	317	0	-1	9	282	690	2338	2185	153	3028	0	3028
25	18.32.14	0	81	309	0	-2	12	338	738	2419	2355	64	3157	0	3157
26	18.17.19	0	80	307	0	-2	16	345	746	2410	2418	-8	3156	0	3156
27	18.21.18	0	80	309	0	-2	14	343	744	2449	2512	-63	3193	0	3193
28	18.21.15	0	80	310	0	-2	14	419	821	2401	2145	256	3222	0	3222
29	18.18.59	0	80	314	0	-2	16	375	783	2424	2426	-2	3207	0	3207
30	10.00.53	0	83	318	0	-2	13	448	860	2180	2151	29	3040	0	3040

7 **POWER AVAILABILITY- DEMAND POSITION AT THE TIME OF MAXIMUM UNRESTRICTED DEMAND DURING NOVEMBER 2013**

Date	Time of peak demand	Generation within Delhi								Import from the Grid	Schedule from the Grid	OD(-)/UD(+)	Demand met	Shedding	Un-Restricted Demand
		RPH	GT	PPCL	Rithala	Bawana	Towmcl	BTPS	Total						
(1)	(2)	(3)	(4)	(5)	(6)	(7)	(8)	(9)= (3) to (8)	(10)	(11)	(12)= (11) - (10)	(13)= (11)+ (12)	(14)	(15)= (13)+ (14)	
1	18.37.51	54	79	304	0	-4	15	377	825	2751	2902	-151	3576	0	3576
2	18.46.39	54	119	261	0	-4	13	345	788	2477	2691	-214	3265	0	3265
3	18.39.26	54	79	304	0	-4	15	377	825	2128	2156	-28	2953	1	2954
4	18.50.16	0	83	266	0	-2	12	344	703	2133	2342	-209	2836	0	2836
5	18.38.54	0	83	262	0	-2	18	306	667	2334	2327	7	3001	0	3001
6	18.44.45	0	84	266	0	-1	16	310	675	2557	2497	60	3232	0	3232
7	18.32.03	0	84	264	0	-2	15	338	699	2596	2557	39	3295	3	3298
8	18.34.58	0	84	313	0	-2	18	342	755	2398	2606	-208	3153	0	3153
9	18.27.43	0	83	264	0	-1	16	393	755	2351	2475	-124	3106	0	3106
10	18.33.27	0	84	264	0	-2	9	245	600	2300	2386	-86	2900	0	2900
11	18.22.48	0	82	311	0	-2	16	246	653	2600	2501	99	3253	0	3253
12	18.31.52	0	85	266	0	-1	16	248	614	2579	2433	146	3193	0	3193
13	18.30.17	0	84	314	0	-1	17	259	673	2450	2561	-111	3123	0	3123
14	18.25.40	0	83	312	0	-1	16	271	681	2523	2422	101	3204	0	3204
15	11.50.16	0	85	319	0	-1	16	256	675	2534	2079	455	3209	0	3209
16	18.38.23	0	84	317	0	-1	16	257	673	2360	2278	82	3033	0	3033
17	18.41.11	0	81	316	0	-1	18	215	629	2450	2347	103	3079	0	3079
18	18.39.35	0	83	313	0	-1	16	225	636	2570	2445	125	3206	0	3206
19	18.37.04	0	82	313	0	-1	13	264	671	2525	2588	-63	3196	0	3196
20	18.30.22	0	83	312	0	-2	15	253	661	2502	2385	117	3163	2	3165
21	18.19.00	0	83	312	0	-1	14	250	658	2534	2473	61	3192	0	3192
22	10.14.49	0	83	315	0	-2	16	368	780	2481	2156	325	3261	64	3325
23	18.18.31	0	82	311	0	-3	10	367	767	2285	2395	-110	3052	2	3054
24	10.44.12	0	83	317	0	-1	9	282	690	2338	2185	153	3028	0	3028
25	18.32.14	0	81	309	0	-2	12	338	738	2419	2355	64	3157	0	3157
26	18.17.19	0	80	307	0	-2	16	345	746	2410	2418	-8	3156	0	3156
27	18.21.18	0	80	309	0	-2	14	343	744	2449	2512	-63	3193	0	3193
28	18.21.15	0	80	310	0	-2	14	419	821	2401	2145	256	3222	0	3222
29	18.18.59	0	80	314	0	-2	16	375	783	2424	2426	-2	3207	0	3207
30	10.00.53	0	83	318	0	-2	13	448	860	2180	2151	29	3040	0	3040

## SOURCEWISE SCHEDULED DRAWL FROM NORTHERN GRID AS WELL AS AVAILABILITY WITHIN DELHI FOR NOVEMBER 2013

### A) AVAILABILITY FROM GENCO AND PRAGATI STNs. (all fig in MUs)

A (i) RPH	4.991
(ii) GT+STG	58.891
(iii) PRAGATI	211.708
(iv) RITHALA	0.000
(v) BAWANA CCGT	0.000
(vi) Timarpur – Okhla	12.450
TOTAL	288.040
B) AVAILABILITY FROM BTPS	224.439
C) AUXILIARY CONSUMPTION OF GENERATING STNs. EXCLUDING BTPS	10.858
D) NET GENERATION AVAILABLE WITHIN DELHI(A+B-C)	<b>501.621</b>

### B) SOURCE WISE SCHEDULED DRAWL FROM THE NORTHERN GRID

NAME OF THE STATION	AVAILABILITY AT POWER PLANT	AVAILABILITY AT DELHI PERIPHERY	ALLOCATION MADE BY NRLDC AT POWER PLANT	ALLOCATION MADE BY NRLDC AT DELHI PERIPHERY
B/SUIL	2.064	1.990	2.064	1.990
SALAL	12.381	11.938	12.381	11.938
SASAN	27.330	26.349	27.324	26.344
TANKAPUR	3.871	3.732	3.871	3.732
CHAMERA	5.237	5.050	5.237	5.050
CHAMERA -II	6.331	6.105	6.331	6.105
CHAMERA -III	3.521	3.395	3.521	3.395
DHAULIGANGA	0.000	0.000	0.000	0.000
SEWA -2	1.486	1.432	1.486	1.432
URI	10.070	9.709	10.070	9.709
URI-II	6.617	6.381	6.617	6.381
KOTESHWAR	6.557	6.322	6.557	6.322
MUNDRA_UMPP	0.000	0.000	0.000	0.000
ANTA (GAS)	25.917	24.989	16.615	16.021
ANTA (RLNG)	5.801	5.593	0.000	0.000
ANTA (LIQUID)	0.252	0.243	0.000	0.000
DADRI (GAS)	43.826	42.254	24.431	23.557
DADRI (RLNG)	20.461	19.730	0.000	0.000
DADRI (LIQUID)	0.156	0.150	0.000	0.000
AURAIYA (GAS)	17.836	17.195	10.021	9.662
AURAIYA (RLNG)	28.416	27.405	0.000	0.000
AURAIYA (LIQUID)	0.824	0.794	0.000	0.000
SINGRAULI	102.287	98.621	98.836	95.291
RIHAND -I	54.281	52.336	53.912	51.981
RIHAND -II	72.216	69.626	69.999	67.489
RIHAND -III	37.580	36.234	37.396	36.056
UNCHAHAAR-I	16.601	16.006	15.355	14.805
UNCHAHAAR-II	30.630	29.532	28.708	27.679
UNCHAHAAR-III	19.983	19.267	18.872	18.196
DADRI (TH)	526.743	507.868	360.482	347.583
DADRI (TH) STAGE-II	529.706	510.724	483.641	466.302
NAPP	24.202	23.335	24.202	23.335
RAPP 'B'	0.000	0.000	0.000	0.000
RAPP 'C'	39.147	37.744	39.147	37.744
NATHPA JHAKRI	29.310	28.262	21.325	20.562
DULASTI	13.986	13.486	13.986	13.486
TEHRI	19.958	19.243	19.958	19.243
JHAJJAR	267.571	257.984	44.509	42.919
KHELGAON	33.129	31.942	28.758	27.728
KHELGAON-II	106.467	102.653	98.794	95.253
FARAKA	15.365	14.814	13.368	12.888
TALA	7.209	6.952	7.209	6.952
TALCHER	0.000	0.000	0.000	0.000
DVC	149.631	148.095	148.095	142.787

NAME OF THE STATION	AVAILABILITY AT POWER PLANT	AVAILABILITY AT DELHI PERIPHERY	ALLOCATION MADE BY NRLDC AT POWER PLANT	ALLOCATION MADE BY NRLDC AT DELHI PERIPHERY
DVC CTPS (BRPL)	0.000	0.000	0.000	0.000
DVC CTPS (BYPL)	0.000	0.000	0.000	0.000
DVC CTPS (NDPL)	0.000	0.000	0.000	0.000
METHON POWER(NDPL)LT-06	152.987	150.967	150.967	145.563
DVC MEJIA (LT-08)(BYPL)	0.000	0.000	0.000	0.000
URS	0.000	0.000	0.000	0.000
MEGHALAYA	4.032	3.987	3.987	3.844
DVC (FOR NDPL) LT-09	6.227	6.162	6.162	5.941
HARYANA (LT-05)	16.805	16.531	16.531	15.935
UTTAR PRADESH	6.622	6.475	6.475	6.243
ORISSA	1.793	1.769	1.769	1.707
TO MEGHALAYA	-22.300	-22.617	-22.617	-23.459
TO ORISSA	0.000	0.000	0.000	0.000
TO UTTAR PRADESH	-17.832	-18.179	-18.179	-18.853
TO JAMMU & KASHMIR	-116.968	-118.893	-118.893	-123.317
TO TAMILNADU	-2.500	-2.562	-2.562	-2.657
TO ANDHRA	-2.133	-2.179	-2.179	-2.260
TO MADHYA PRADESH	-150.829	-153.763	-153.763	-159.477
TO GUJRAT	-1.244	-1.268	-1.268	-1.315
TO MAHARASHTRA	-7.991	-8.172	-8.172	-8.476
TO PUNJAB	0.000	0.000	0.000	0.000
TO HIMACHAL PRADESH	-41.420	-42.111	-42.111	-43.693
TO WEST BENGAL	0.000	0.000	0.000	0.000
POWER EXCHANGE(IEX)	22.684	21.866	22.684	21.866
TO POWER EXCHANGE (IEX)	-214.600	-222.533	-214.600	-222.533
POWRER EXCHANGE(PX)	0.000	0.000	0.000	0.000
TO POWER EXCHANGE (PX)	-49.503	-51.341	-49.503	-51.341
TO SHARE PROJECT (HARYANA)	0.000	0.000	0.000	0.000
TO SHARE PROJECT (PUNJAB)	0.000	0.000	0.000	0.000
<b>TOTAL</b>	<b>1908.785</b>	<b>1809.619</b>	<b>1337.807</b>	<b>1243.635</b>

**C) AGENCY WISE BREAKUP OF ENERGY SCHEDULED DRAW FROM THE GRID**

NAME OF THE STATION	AVAILABILITY AT POWER PLANT	AVAILABILITY AT DELHI PERIPHERY	ALLOCATION MADE BY NRLDC AT POWER PLANT	ALLOCATION MADE BY NRLDC AT DELHI PERIPHERY
NTPC - NR	1533.517	1478.567	1218.268	1174.622
NTPC - ER	154.961	149.409	140.920	135.869
NHPC	65.563	63.218	65.563	63.218
NPC	63.349	61.079	63.349	61.079
SASAN	27.330	26.349	27.324	26.344
KOTESHWAR	6.557	6.322	6.557	6.322
MUNDRA_UMPP	0.000	0.000	0.000	0.000
NATHPA JHAKRI	29.310	28.262	21.325	20.562
TEHRI	19.958	19.243	19.958	19.243
TALA	7.209	6.952	7.209	6.952
JHAJJAR	267.571	257.984	44.509	42.919
TALCHER	0.000	0.000	0.000	0.000
DVC	149.631	148.095	148.095	142.787
DVC CTPS (BRPL)	0.000	0.000	0.000	0.000
DVC CTPS (BYPL)	0.000	0.000	0.000	0.000
DVC CTPS (NDPL)	0.000	0.000	0.000	0.000
METHON POWER (NDPL)-LT-06	152.987	150.967	150.967	145.563
DVC MEJIA (LT-08)(BYPL)	0.000	0.000	0.000	0.000
URS	0.000	0.000	0.000	0.000
MEGHALAYA	4.032	3.987	3.987	3.844
MADHYA PRADESH(WR)	0.000	0.000	0.000	0.000
DVC (FOR NDPL) LT-09	6.227	6.162	6.162	5.941
HARYANA (LT -05)	16.805	16.531	16.531	15.935
UTTAR PRADESH	6.622	6.475	6.475	6.243
ORISSA	1.793	1.769	1.769	1.707
POWER EXCHANGE(IEX)	22.684	21.866	22.684	21.866
POWER EXCHANGE(PX)	0.000	0.000	0.000	0.000
<b>TOTAL</b>	<b>2536.106</b>	<b>2453.236</b>	<b>1971.654</b>	<b>1901.017</b>

**D) AGENCY WISE BREAKUP OF ENERGY SCHEDULED BY NRLDC FOR EXPORT TO OTHER UTILITIES FROM DTL**

NAME OF THE STATION	AVAILABILITY AT POWER PLANT	AVAILABILITY AT PERIPHERY	ALLOCATION MADE BY NRLDC AT POWER PLANT	ALLOCATION MADE BY NRLDC AT POWER PERIPHERY
TO MEGHALAYA	-22.300	-22.617	-22.617	-23.459
TO ORISSA	0.000	0.000	0.000	0.000
TO UTTAR PRADESH	-17.832	-18.179	-18.179	-18.853
TO JAMMU & KASHMIR	-116.968	-118.893	-118.893	-123.317
TO ANDHRA	-2.133	-2.179	-2.179	-2.260
TO TAMILNADU	-2.500	-2.562	-2.562	-2.657
TO MADHYA PRADESH	-150.829	-153.763	-153.763	-159.477
TO GUJRAT	-1.244	-1.268	-1.268	-1.315
TO RAJASTHAN	0.000	0.000	0.000	0.000
TO MAHARASHTRA	-7.991	-8.172	-8.172	-8.476
TO PUNJAB	0.000	0.000	0.000	0.000
TO HIMACHAL PRADESH	-41.420	-42.111	-42.111	-43.693
TO WEST BENGAL	0.000	0.000	0.000	0.000
TO POWER EXCHANGE (IEX)	-214.600	-222.533	-214.600	-222.533
TO POWER EXCHANGE (PX)	-49.503	-51.341	-49.503	-51.341
TO SHARE PROJECT (HARYANA)	0.000	0.000	0.000	0.000
TO SHARE PROJECT (PUNJAB)	0.000	0.000	0.000	0.000
<b>TOTAL</b>	<b>-627.321</b>	<b>-643.618</b>	<b>-633.847</b>	<b>-657.382</b>
<b>TOTAL SCHEDULED DRAWAL FROM THE GRID</b>	<b>1908.785</b>	<b>1809.619</b>	<b>1337.807</b>	<b>1243.635</b>
TOTAL CONSUMPTION INCLUDING AUX. OF GENERATING STNs. EXCLUDING BTPS				1612.308
NET CONSUMPTION				<b>1601.450</b>
AVAILABILITY WITHIN DELHI				501.621
ACTUAL DRAWAL FROM THE GRID				1099.829
OVER DRAWAL(+)/UNDER DRAWAL(-) FROM THE GRID ON THE BASIS OF SCHEDULED ALLOCATION MADE BY NRLDC TO DELHI AT PERIPHERY				-143.806
LOAD SHEDDING				1.262
UNRESTRICTED DEMAND (GROSS)				1613.570
UNRESTRICTED DEMAND (NET)				1602.712
MAX. NET CONSUMPTION				61.622 ON 01.11.2013
MAX. LOAD SHEDDING				275MW ON 11.11.2013 AT 07.00HRS.
<b>PEAK LOAD</b>	Peak Demand during the month			SHEDDING AT PEAK TIME
DAY PEAK	3261MW AT 10.14.49HRS ON 22.11.2013			64 MW
EVENING PEAK	3576MW AT 18.37.51HRS ON 01.11.2013			0 MW
P.L.F. OF GENCO AND PRAGATI STNs.	RPH			5.13%
	GT			30.29%
	PRAGATI			89.10%
	RITHALA			0.00%
	BAWANA			0.00%
	Timarpur Okhla			108.07%



DATE	No. of Under Freq. Relay Operated	Shedding due to under frequency relay operation in MUs					Shedding due to Grid Restrictions (Over drawl / low freq.)			
		BSES		NDPL	NDMC	TOTAL	BSES		NDPL	NDMC
		BYPL	BRPL				BYPL	BRPL		
1	2	3	4	5	6	7=3 to 6	8	9	10	11
01-Nov-13	0	0.000	0.000	0.000	0.000	<b>0.000</b>	0.000	0.000	0.000	0.000
02-Nov-13	0	0.000	0.000	0.000	0.000	<b>0.000</b>	0.000	0.000	0.000	0.000
03-Nov-13	0	0.000	0.000	0.000	0.000	<b>0.000</b>	0.000	0.000	0.000	0.000
04-Nov-13	0	0.000	0.000	0.000	0.000	<b>0.000</b>	0.000	0.000	0.000	0.000
05-Nov-13	0	0.000	0.000	0.000	0.000	<b>0.000</b>	0.000	0.000	0.000	0.000
06-Nov-13	0	0.000	0.000	0.000	0.000	<b>0.000</b>	0.000	0.000	0.000	0.000
07-Nov-13	0	0.000	0.000	0.000	0.000	<b>0.000</b>	0.000	0.000	0.000	0.000
08-Nov-13	0	0.000	0.000	0.000	0.000	<b>0.000</b>	0.000	0.000	0.000	0.000
09-Nov-13	0	0.000	0.000	0.000	0.000	<b>0.000</b>	0.000	0.000	0.000	0.000
10-Nov-13	0	0.000	0.000	0.000	0.000	<b>0.000</b>	0.000	0.000	0.000	0.000
11-Nov-13	0	0.000	0.000	0.000	0.000	<b>0.000</b>	0.033	0.066	0.051	0.000
12-Nov-13	1	0.001	0.000	0.000	0.000	<b>0.001</b>	0.000	0.000	0.000	0.000
13-Nov-13	0	0.000	0.000	0.000	0.000	<b>0.000</b>	0.000	0.000	0.000	0.000
14-Nov-13	0	0.000	0.000	0.000	0.000	<b>0.000</b>	0.000	0.000	0.005	0.000
15-Nov-13	0	0.000	0.000	0.000	0.000	<b>0.000</b>	0.000	0.000	0.000	0.000
16-Nov-13	0	0.000	0.000	0.000	0.000	<b>0.000</b>	0.000	0.000	0.000	0.000
17-Nov-13	0	0.000	0.000	0.000	0.000	<b>0.000</b>	0.000	0.000	0.000	0.000
18-Nov-13	3	0.009	0.001	0.000	0.000	<b>0.010</b>	0.040	0.040	0.000	0.000
19-Nov-13	0	0.000	0.000	0.000	0.000	<b>0.000</b>	0.016	0.000	0.031	0.000
20-Nov-13	0	0.000	0.000	0.000	0.000	<b>0.000</b>	0.000	0.000	0.008	0.000
21-Nov-13	0	0.000	0.000	0.000	0.000	<b>0.000</b>	0.000	0.000	0.000	0.000
22-Nov-13	1	0.000	0.000	0.004	0.000	<b>0.004</b>	0.000	0.133	0.020	0.000
23-Nov-13	1	0.000	0.000	0.000	0.000	<b>0.000</b>	0.000	0.000	0.000	0.000
24-Nov-13	1	0.001	0.000	0.000	0.000	<b>0.001</b>	0.015	0.045	0.003	0.000
25-Nov-13	0	0.000	0.000	0.000	0.000	<b>0.000</b>	0.000	0.000	0.028	0.000
26-Nov-13	0	0.000	0.000	0.000	0.000	<b>0.000</b>	0.000	0.000	0.000	0.000
27-Nov-13	1	0.000	0.000	0.001	0.000	<b>0.001</b>	0.000	0.000	0.000	0.000
28-Nov-13	0	0.000	0.000	0.000	0.000	<b>0.000</b>	0.000	0.000	0.000	0.000
29-Nov-13	0	0.000	0.000	0.000	0.000	<b>0.000</b>	0.000	0.000	0.000	0.000
30-Nov-13	3	0.002	0.000	0.002	0.000	<b>0.004</b>	0.000	0.000	0.000	0.000
<b>TOTAL</b>	<b>11</b>	<b>0.013</b>	<b>0.001</b>	<b>0.007</b>	<b>0.000</b>	<b>0.021</b>	<b>0.104</b>	<b>0.284</b>	<b>0.146</b>	<b>0.000</b>

ALL FIGURES IN MU<sub>s</sub>

Date	Shedding due to Transmission/Grid Constraints in Central Sector Stations / TTC / ATC VIOLATION				TOTAL	TOTAL SHEDDING DUE TO GRID RESTRICTIONS	Due to T&D Constraints				
	BSES		NDPL	NDMC			DTL				
	BYPL	BRPL					BSES		NDPL	NDMC	MES
			BYPL	BRPL							
<b>1</b>	12	13	14	15	<b>16=8to15</b>	<b>17=16+7</b>	18	19	20	21	22
01-Nov-13	0.000	0.000	0.000	0.000	<b>0.000</b>	<b>0.000</b>	0.000	0.000	0.000	0.000	0.000
02-Nov-13	0.000	0.000	0.000	0.000	<b>0.000</b>	<b>0.000</b>	0.000	0.005	0.000	0.000	0.000
03-Nov-13	0.000	0.000	0.000	0.000	<b>0.000</b>	<b>0.000</b>	0.000	0.001	0.000	0.000	0.000
04-Nov-13	0.000	0.000	0.000	0.000	<b>0.000</b>	<b>0.000</b>	0.000	0.000	0.002	0.000	0.000
05-Nov-13	0.000	0.000	0.000	0.000	<b>0.000</b>	<b>0.000</b>	0.000	0.000	0.000	0.000	0.000
06-Nov-13	0.000	0.000	0.000	0.000	<b>0.000</b>	<b>0.000</b>	0.000	0.002	0.000	0.000	0.000
07-Nov-13	0.000	0.000	0.000	0.000	<b>0.000</b>	<b>0.000</b>	0.000	0.000	0.028	0.000	0.000
08-Nov-13	0.000	0.000	0.000	0.000	<b>0.000</b>	<b>0.000</b>	0.000	0.005	0.000	0.000	0.000
09-Nov-13	0.000	0.000	0.000	0.000	<b>0.000</b>	<b>0.000</b>	0.000	0.000	0.000	0.000	0.000
10-Nov-13	0.000	0.000	0.000	0.000	<b>0.000</b>	<b>0.000</b>	0.000	0.000	0.000	0.000	0.000
11-Nov-13	0.000	0.000	0.000	0.000	<b>0.150</b>	<b>0.150</b>	0.000	0.000	0.005	0.000	0.000
12-Nov-13	0.000	0.000	0.000	0.000	<b>0.000</b>	<b>0.001</b>	0.000	0.000	0.003	0.000	0.000
13-Nov-13	0.000	0.000	0.000	0.000	<b>0.000</b>	<b>0.000</b>	0.000	0.000	0.000	0.000	0.000
14-Nov-13	0.000	0.000	0.000	0.000	<b>0.005</b>	<b>0.005</b>	0.000	0.000	0.000	0.000	0.000
15-Nov-13	0.000	0.000	0.000	0.000	<b>0.000</b>	<b>0.000</b>	0.000	0.000	0.021	0.000	0.000
16-Nov-13	0.000	0.000	0.000	0.000	<b>0.000</b>	<b>0.000</b>	0.000	0.000	0.020	0.000	0.000
17-Nov-13	0.000	0.000	0.000	0.000	<b>0.000</b>	<b>0.000</b>	0.000	0.000	0.003	0.000	0.000
18-Nov-13	0.000	0.000	0.000	0.000	<b>0.080</b>	<b>0.090</b>	0.000	0.020	0.000	0.000	0.000
19-Nov-13	0.000	0.000	0.000	0.000	<b>0.047</b>	<b>0.047</b>	0.000	0.013	0.000	0.000	0.000
20-Nov-13	0.000	0.000	0.000	0.000	<b>0.008</b>	<b>0.008</b>	0.000	0.000	0.000	0.000	0.000
21-Nov-13	0.000	0.000	0.000	0.000	<b>0.000</b>	<b>0.000</b>	0.000	0.000	0.000	0.000	0.000
22-Nov-13	0.000	0.000	0.000	0.000	<b>0.153</b>	<b>0.157</b>	0.000	0.028	0.000	0.000	0.000
23-Nov-13	0.000	0.000	0.000	0.000	<b>0.000</b>	<b>0.000</b>	0.000	0.008	0.000	0.000	0.000
24-Nov-13	0.000	0.000	0.000	0.000	<b>0.063</b>	<b>0.064</b>	0.000	0.000	0.000	0.000	0.000
25-Nov-13	0.000	0.000	0.000	0.000	<b>0.028</b>	<b>0.028</b>	0.000	0.000	0.000	0.000	0.000
26-Nov-13	0.000	0.000	0.000	0.000	<b>0.000</b>	<b>0.000</b>	0.000	0.003	0.001	0.000	0.000
27-Nov-13	0.000	0.000	0.000	0.000	<b>0.000</b>	<b>0.001</b>	0.000	0.000	0.000	0.000	0.000
28-Nov-13	0.000	0.000	0.000	0.000	<b>0.000</b>	<b>0.000</b>	0.000	0.000	0.015	0.000	0.000
29-Nov-13	0.000	0.000	0.000	0.000	<b>0.000</b>	<b>0.000</b>	0.000	0.000	0.000	0.000	0.000
30-Nov-13	0.000	0.000	0.000	0.000	<b>0.000</b>	<b>0.004</b>	0.000	0.000	0.000	0.000	0.000
<b>TOTAL</b>	<b>0.000</b>	<b>0.000</b>	<b>0.000</b>	<b>0.000</b>	<b>0.534</b>	<b>0.555</b>	<b>0.000</b>	<b>0.085</b>	<b>0.098</b>	<b>0.000</b>	<b>0.000</b>

ALL FIGURES IN MU<sub>s</sub>

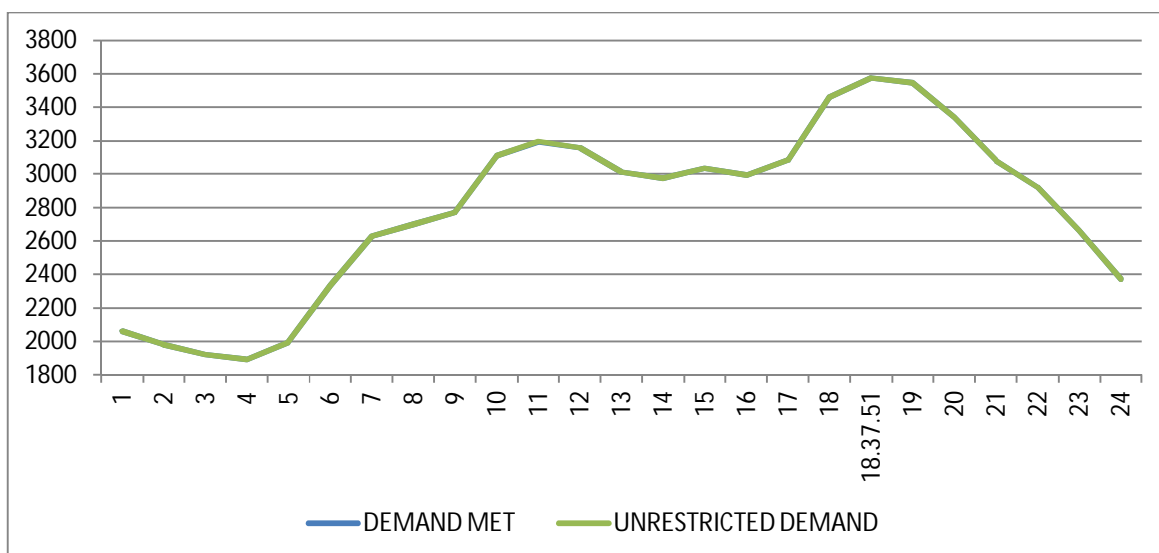
DATE	DUE TO T&D CONTRAINTS				OTHER AGENCIES LIKE GENCO, BBMB, BTPS ETC.	THEFT PRONE SHEDDING			TOTAL SHEDDING DUE TO T&D CONSTS. & THEFT PRONE	GRAND TOTAL
	DISCOMS					BSES		NDPL		
	BSES		NDPL	NDMC		BSES				
	BYPL	BRPL				BYPL	BRPL			
1	23	24	25		26	27	28	29	30=18 to29	31=30+17
01-Nov-13	0.000	0.015	0.000	0.000	0.000	0.000	0.000	0.003	<b>0.018</b>	<b>0.018</b>
02-Nov-13	0.009	0.000	0.000	0.000	0.000	0.000	0.000	0.000	<b>0.014</b>	<b>0.014</b>
03-Nov-13	0.000	0.002	0.002	0.000	0.000	0.000	0.000	0.000	<b>0.005</b>	<b>0.005</b>
04-Nov-13	0.000	0.009	0.021	0.000	0.000	0.000	0.000	0.000	<b>0.032</b>	<b>0.032</b>
05-Nov-13	0.010	0.004	0.000	0.000	0.000	0.000	0.000	0.003	<b>0.017</b>	<b>0.017</b>
06-Nov-13	0.005	0.034	0.003	0.000	0.000	0.000	0.000	0.007	<b>0.051</b>	<b>0.051</b>
07-Nov-13	0.007	0.007	0.015	0.000	0.000	0.000	0.000	0.007	<b>0.064</b>	<b>0.064</b>
08-Nov-13	0.008	0.000	0.009	0.000	0.000	0.000	0.000	0.003	<b>0.025</b>	<b>0.025</b>
09-Nov-13	0.000	0.002	0.000	0.000	0.000	0.000	0.000	0.005	<b>0.007</b>	<b>0.007</b>
10-Nov-13	0.000	0.000	0.000	0.000	0.000	0.000	0.000	0.001	<b>0.001</b>	<b>0.001</b>
11-Nov-13	0.000	0.000	0.009	0.000	0.000	0.000	0.000	0.003	<b>0.017</b>	<b>0.167</b>
12-Nov-13	0.000	0.002	0.000	0.000	0.000	0.000	0.000	0.000	<b>0.005</b>	<b>0.006</b>
13-Nov-13	0.005	0.002	0.000	0.000	0.000	0.000	0.000	0.000	<b>0.007</b>	<b>0.007</b>
14-Nov-13	0.000	0.000	0.006	0.000	0.000	0.000	0.000	0.000	<b>0.006</b>	<b>0.011</b>
15-Nov-13	0.000	0.000	0.000	0.000	0.000	0.000	0.000	0.000	<b>0.021</b>	<b>0.021</b>
16-Nov-13	0.003	0.004	0.003	0.000	0.000	0.000	0.000	0.001	<b>0.031</b>	<b>0.031</b>
17-Nov-13	0.000	0.000	0.002	0.000	0.000	0.000	0.000	0.001	<b>0.006</b>	<b>0.006</b>
18-Nov-13	0.000	0.000	0.001	0.000	0.000	0.000	0.000	0.002	<b>0.023</b>	<b>0.113</b>
19-Nov-13	0.000	0.000	0.000	0.000	0.000	0.000	0.000	0.003	<b>0.016</b>	<b>0.063</b>
20-Nov-13	0.000	0.000	0.025	0.000	0.000	0.000	0.000	0.004	<b>0.029</b>	<b>0.037</b>
21-Nov-13	0.000	0.001	0.001	0.000	0.000	0.000	0.000	0.005	<b>0.007</b>	<b>0.007</b>
22-Nov-13	0.006	0.006	0.037	0.000	0.000	0.000	0.000	0.001	<b>0.078</b>	<b>0.235</b>
23-Nov-13	0.002	0.000	0.000	0.000	0.000	0.000	0.000	0.003	<b>0.013</b>	<b>0.013</b>
24-Nov-13	0.000	0.004	0.000	0.000	0.000	0.000	0.000	0.000	<b>0.004</b>	<b>0.068</b>
25-Nov-13	0.000	0.000	0.000	0.000	0.000	0.000	0.000	0.002	<b>0.002</b>	<b>0.030</b>
26-Nov-13	0.009	0.131	0.001	0.000	0.000	0.000	0.000	0.001	<b>0.146</b>	<b>0.146</b>
27-Nov-13	0.000	0.005	0.000	0.000	0.000	0.000	0.000	0.001	<b>0.006</b>	<b>0.007</b>
28-Nov-13	0.009	0.018	0.002	0.000	0.000	0.000	0.000	0.000	<b>0.044</b>	<b>0.044</b>
29-Nov-13	0.003	0.000	0.000	0.002	0.000	0.000	0.000	0.004	<b>0.009</b>	<b>0.009</b>
30-Nov-13	0.000	0.003	0.000	0.000	0.000	0.000	0.000	0.000	<b>0.003</b>	<b>0.007</b>
<b>TOTAL</b>	<b>0.076</b>	<b>0.249</b>	<b>0.137</b>	<b>0.002</b>	<b>0.000</b>	<b>0.000</b>	<b>0.000</b>	<b>0.060</b>	<b>0.707</b>	<b>1.262</b>

DATE	(NET CONS.)	MAXL DEMAND MET DURING THE DAY	TIME OF OCCURRENCE OF MAX DEMAND	SHEDDING AT THIS TIME	UN-RESTRICTED DEMAND	MAXIMUM UN-RESTRICTED DEMAND DURING THE DAY	TIME OF MAX. UN-REST. DEMAND	DEMAND AT THAT TIME	SHEDDING AT THAT TIME
	In Mus.	IN MW	IN HRS.	IN MW	IN MW	IN MW	HRS.	IN MW	IN MW
<b>1</b>	<b>32</b>	<b>33</b>	<b>34</b>	<b>35</b>	<b>36=33+35</b>	<b>37=39+40</b>	<b>38</b>	<b>39</b>	<b>40</b>
01-Nov-13	61.622	<b>3576</b>	18:37:51	0	<b>3576</b>	<b>3576</b>	18:37:51	<b>3576</b>	0
02-Nov-13	57.669	<b>3265</b>	18:46:39	0	<b>3265</b>	<b>3265</b>	18:46:39	<b>3265</b>	0
03-Nov-13	50.184	<b>2953</b>	18:39:26	1	<b>2954</b>	<b>2954</b>	18:39:26	<b>2953</b>	1
04-Nov-13	48.850	<b>2836</b>	18:50:16	0	<b>2836</b>	<b>2836</b>	18:50:16	<b>2836</b>	0
05-Nov-13	51.165	<b>3001</b>	18:38:54	0	<b>3001</b>	<b>3001</b>	18:38:54	<b>3001</b>	0
06-Nov-13	54.487	<b>3232</b>	18:44:45	0	<b>3232</b>	<b>3232</b>	18:44:45	<b>3232</b>	0
07-Nov-13	53.369	<b>3295</b>	18:32:03	3	<b>3298</b>	<b>3298</b>	18:32:03	<b>3295</b>	3
08-Nov-13	53.321	<b>3153</b>	18:34:58	0	<b>3153</b>	<b>3153</b>	18:34:58	<b>3153</b>	0
09-Nov-13	50.442	<b>3106</b>	18:27:43	0	<b>3106</b>	<b>3106</b>	18:27:43	<b>3106</b>	0
10-Nov-13	49.517	<b>2900</b>	18:33:27	0	<b>2900</b>	<b>2900</b>	18:33:27	<b>2900</b>	0
11-Nov-13	52.245	<b>3253</b>	18:22:48	0	<b>3253</b>	<b>3253</b>	18:22:48	<b>3253</b>	0
12-Nov-13	53.915	<b>3193</b>	18:31:52	0	<b>3193</b>	<b>3193</b>	18:31:52	<b>3193</b>	0
13-Nov-13	55.047	<b>3123</b>	18:30:17	0	<b>3123</b>	<b>3123</b>	18:30:17	<b>3123</b>	0
14-Nov-13	55.977	<b>3204</b>	18:25:40	0	<b>3204</b>	<b>3204</b>	18:25:40	<b>3204</b>	0
15-Nov-13	56.161	<b>3209</b>	11:50:16	0	<b>3209</b>	<b>3209</b>	11:50:16	<b>3209</b>	0
16-Nov-13	53.910	<b>3033</b>	18:38:23	0	<b>3033</b>	<b>3033</b>	18:38:23	<b>3033</b>	0
17-Nov-13	51.032	<b>3079</b>	18:41:11	0	<b>3079</b>	<b>3079</b>	18:41:11	<b>3079</b>	0
18-Nov-13	52.303	<b>3206</b>	18:39:35	0	<b>3206</b>	<b>3206</b>	18:39:35	<b>3206</b>	0
19-Nov-13	52.568	<b>3196</b>	18:37:04	0	<b>3196</b>	<b>3196</b>	18:37:04	<b>3196</b>	0
20-Nov-13	53.883	<b>3163</b>	18:30:22	2	<b>3165</b>	<b>3165</b>	18:30:22	<b>3163</b>	2
21-Nov-13	54.398	<b>3192</b>	18:19:00	0	<b>3192</b>	<b>3192</b>	18:19:00	<b>3192</b>	0
22-Nov-13	54.690	<b>3261</b>	10:14:49	64	<b>3325</b>	<b>3325</b>	10:14:49	<b>3261</b>	64
23-Nov-13	51.855	<b>3052</b>	18:18:31	2	<b>3054</b>	<b>3054</b>	18:18:31	<b>3052</b>	2
24-Nov-13	49.889	<b>3028</b>	10:44:12	0	<b>3028</b>	<b>3028</b>	10:44:12	<b>3028</b>	0
25-Nov-13	53.553	<b>3157</b>	18:32:14	0	<b>3157</b>	<b>3157</b>	18:32:14	<b>3157</b>	0
26-Nov-13	53.056	<b>3156</b>	18:17:19	0	<b>3156</b>	<b>3156</b>	18:17:19	<b>3156</b>	0
27-Nov-13	54.417	<b>3193</b>	18:21:18	0	<b>3193</b>	<b>3193</b>	18:21:18	<b>3193</b>	0
28-Nov-13	53.823	<b>3222</b>	18:21:15	0	<b>3222</b>	<b>3222</b>	18:21:15	<b>3222</b>	0
29-Nov-13	54.340	<b>3207</b>	18:18:59	0	<b>3207</b>	<b>3207</b>	18:18:59	<b>3207</b>	0
30-Nov-13	53.762	<b>3040</b>	10:00:53	0	<b>3040</b>	<b>3040</b>	10:00:53	<b>3040</b>	0
<b>TOTAL</b>	<b>1601.450</b>	<b>3576</b> 01.11.13	18:37:51	0	<b>3576</b> 01.11.13	<b>3576</b>	18:37:51	3576	0

10 **LOAD PATTERN OF DELHI ON THE DAY OF PEAK DEMAND MET DURING NOVEMBER 2013 ON 01.11.2013- 3576MW AT 18.37.51HRS.**

All figures in MW

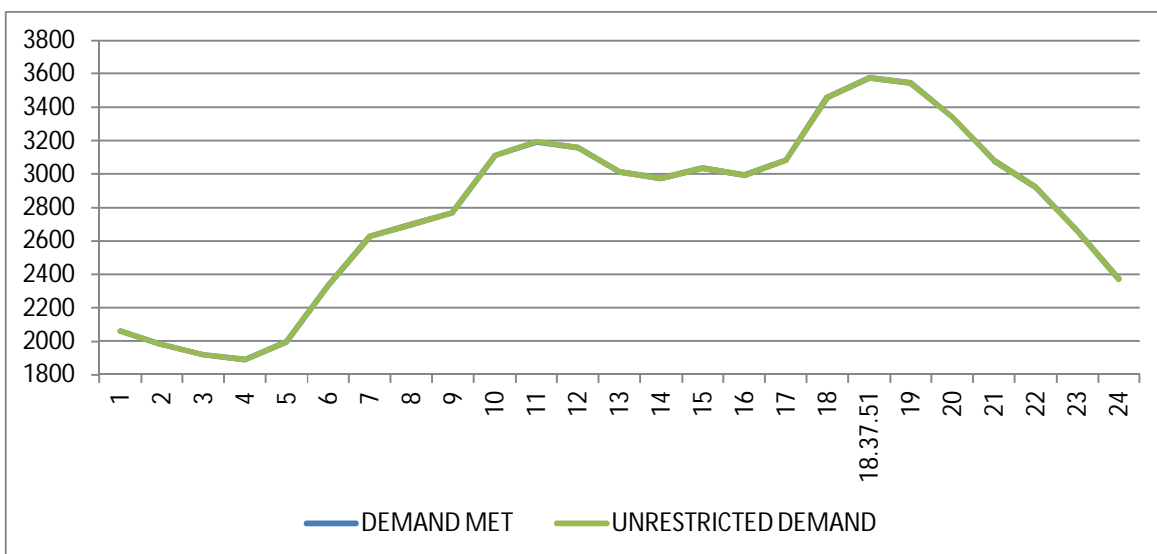
Hrs.	Demand	Load Shedding	Un-Restricted Demand
1	2059	0	2059
2	1981	0	1981
3	1920	0	1920
4	1892	0	1892
5	1996	0	1996
6	2335	0	2335
7	2629	0	2629
8	2698	0	2698
9	2770	0	2770
10	3108	0	3108
11	3192	2	3194
12	3156	0	3156
13	3011	0	3011
14	2974	0	2974
15	3033	0	3033
16	2993	1	2994
17	3082	0	3082
18	3461	0	3461
18.37.51	3576	0	3576
19	3546	0	3546
20	3341	0	3341
21	3079	0	3079
22	2922	0	2922
23	2661	0	2661
24	2373	0	2373
<b>TOTAL</b>	<b>61.622</b>	<b>0.018</b>	<b>61.640</b>



**11 LOAD PATTERN OF DELHI ON THE DAY OF MAXIMUM UN-RESTRICTED DEMAND DURING NOVEMBER 2013 ON 01.11.2013- 3576MW at 18.37.51HRS.**

All figures in MW

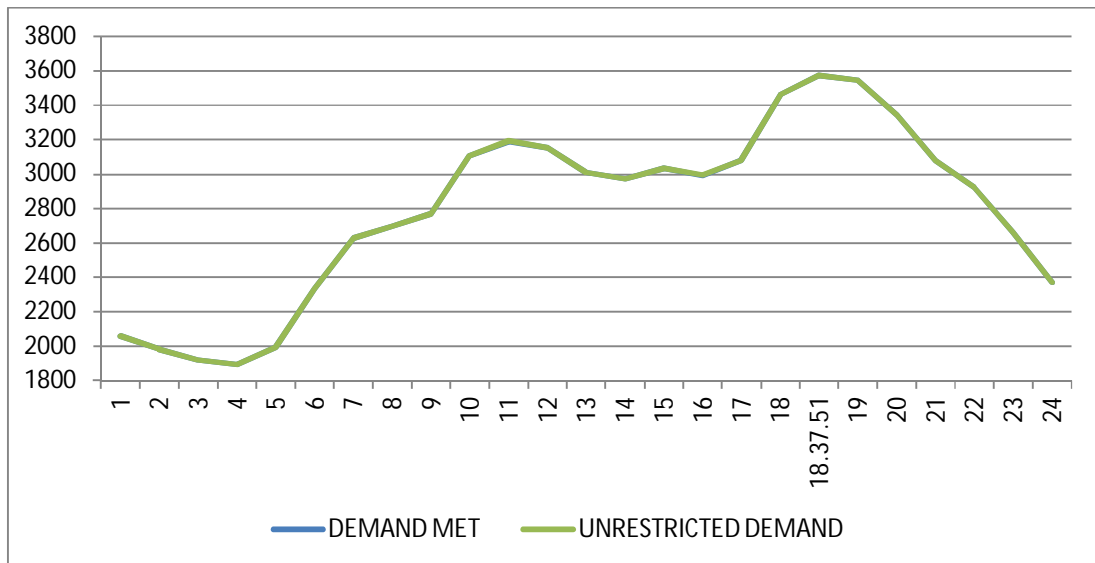
Hrs.	Demand	Load Shedding	Un-Restricted Demand
1	2059	0	2059
2	1981	0	1981
3	1920	0	1920
4	1892	0	1892
5	1996	0	1996
6	2335	0	2335
7	2629	0	2629
8	2698	0	2698
9	2770	0	2770
10	3108	0	3108
11	3192	2	3194
12	3156	0	3156
13	3011	0	3011
14	2974	0	2974
15	3033	0	3033
16	2993	1	2994
17	3082	0	3082
18	3461	0	3461
18.37.51	3576	0	3576
19	3546	0	3546
20	3341	0	3341
21	3079	0	3079
22	2922	0	2922
23	2661	0	2661
24	2373	0	2373
<b>TOTAL</b>	<b>61.622</b>	<b>0.018</b>	<b>61.640</b>



**12 LOAD PATTERN OF DELHI ON THE DAY OF MAXIMUM ENERGY CONSUMED DURING NOVEMBER 2013 – 01.11.2013 – 61.622Mus**

All figures in MW

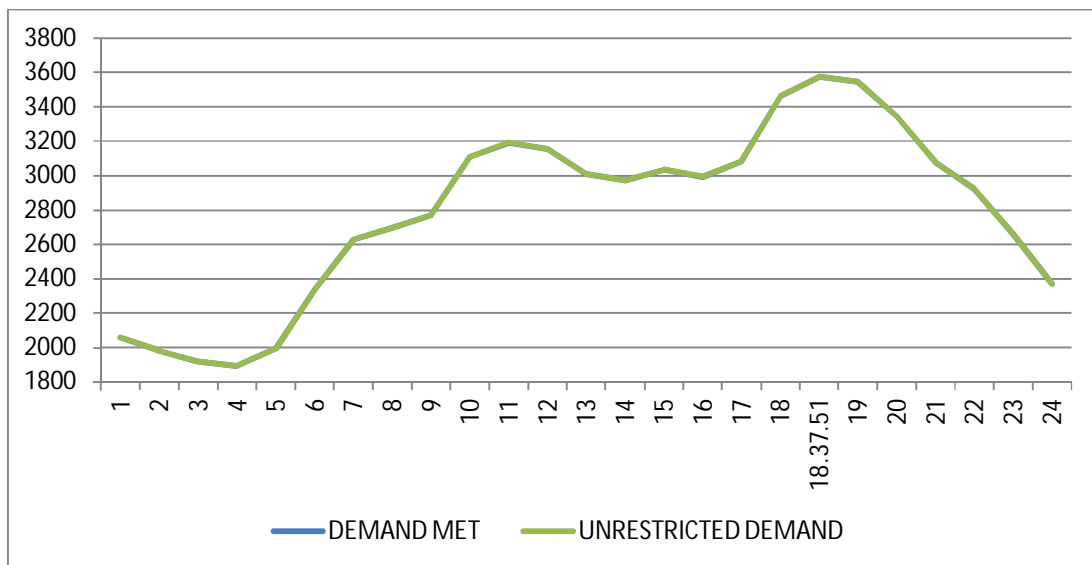
Hrs.	Demand	Load Shedding	Un-Restricted Demand
1	2059	0	2059
2	1981	0	1981
3	1920	0	1920
4	1892	0	1892
5	1996	0	1996
6	2335	0	2335
7	2629	0	2629
8	2698	0	2698
9	2770	0	2770
10	3108	0	3108
11	3192	2	3194
12	3156	0	3156
13	3011	0	3011
14	2974	0	2974
15	3033	0	3033
16	2993	1	2994
17	3082	0	3082
18	3461	0	3461
<b>18.37.51</b>	<b>3576</b>	<b>0</b>	<b>3576</b>
19	3546	0	3546
20	3341	0	3341
21	3079	0	3079
22	2922	0	2922
23	2661	0	2661
24	2373	0	2373
<b>TOTAL</b>	<b>61.622</b>	<b>0.018</b>	<b>61.640</b>



**13 LOAD PATTERN OF DELHI ON THE DAY OF MAXIMUM UNRESTRICTED ENERGY DEMAND DURING NOVEMBER 2013 – 01.11.2013 – 61.640 Mus**

All figures in MW

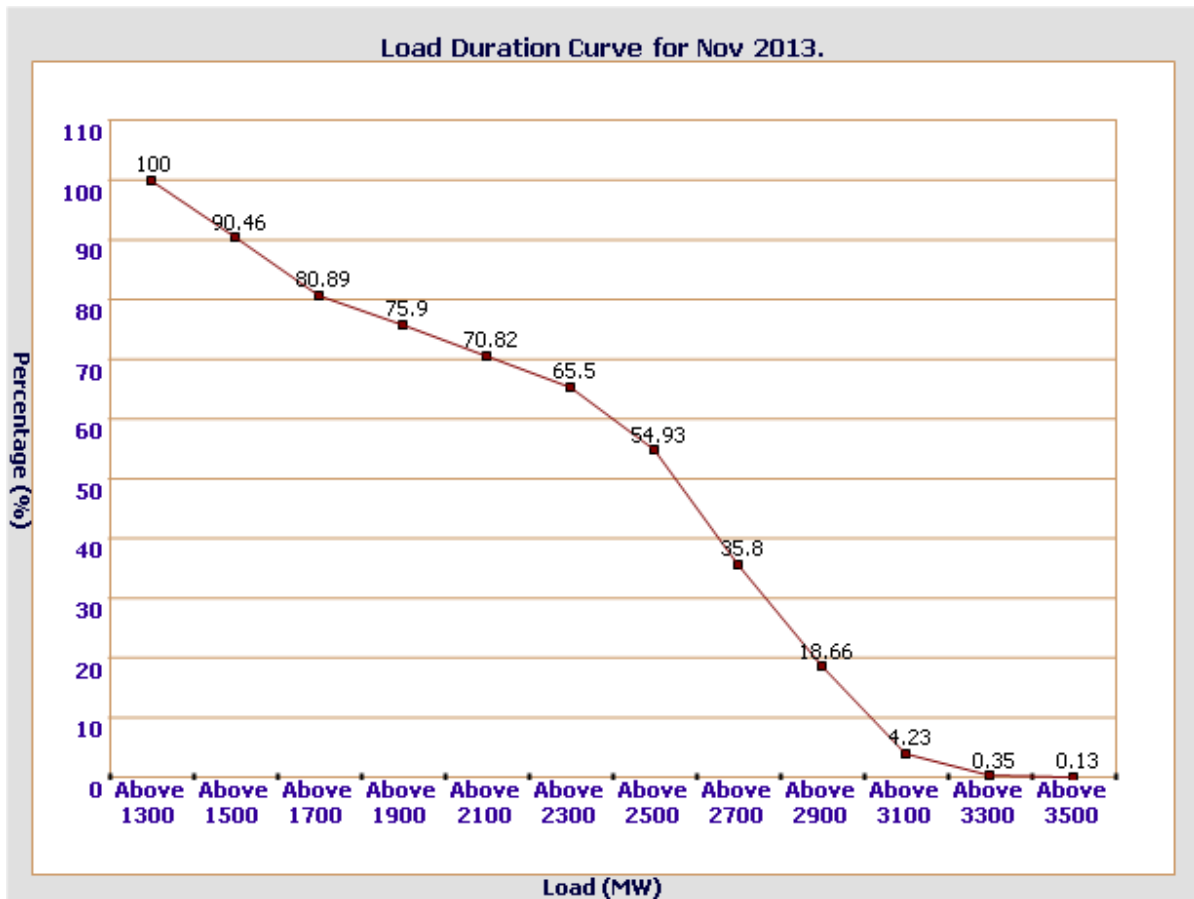
Hrs.	Demand	Load Shedding	Un-Restricted Demand
1	2059	0	2059
2	1981	0	1981
3	1920	0	1920
4	1892	0	1892
5	1996	0	1996
6	2335	0	2335
7	2629	0	2629
8	2698	0	2698
9	2770	0	2770
10	3108	0	3108
11	3192	2	3194
12	3156	0	3156
13	3011	0	3011
14	2974	0	2974
15	3033	0	3033
16	2993	1	2994
17	3082	0	3082
18	3461	0	3461
<b>18.37.51</b>	<b>3576</b>	<b>0</b>	<b>3576</b>
19	3546	0	3546
20	3341	0	3341
21	3079	0	3079
22	2922	0	2922
23	2661	0	2661
24	2373	0	2373
<b>TOTAL</b>	<b>61.622</b>	<b>0.018</b>	<b>61.640</b>





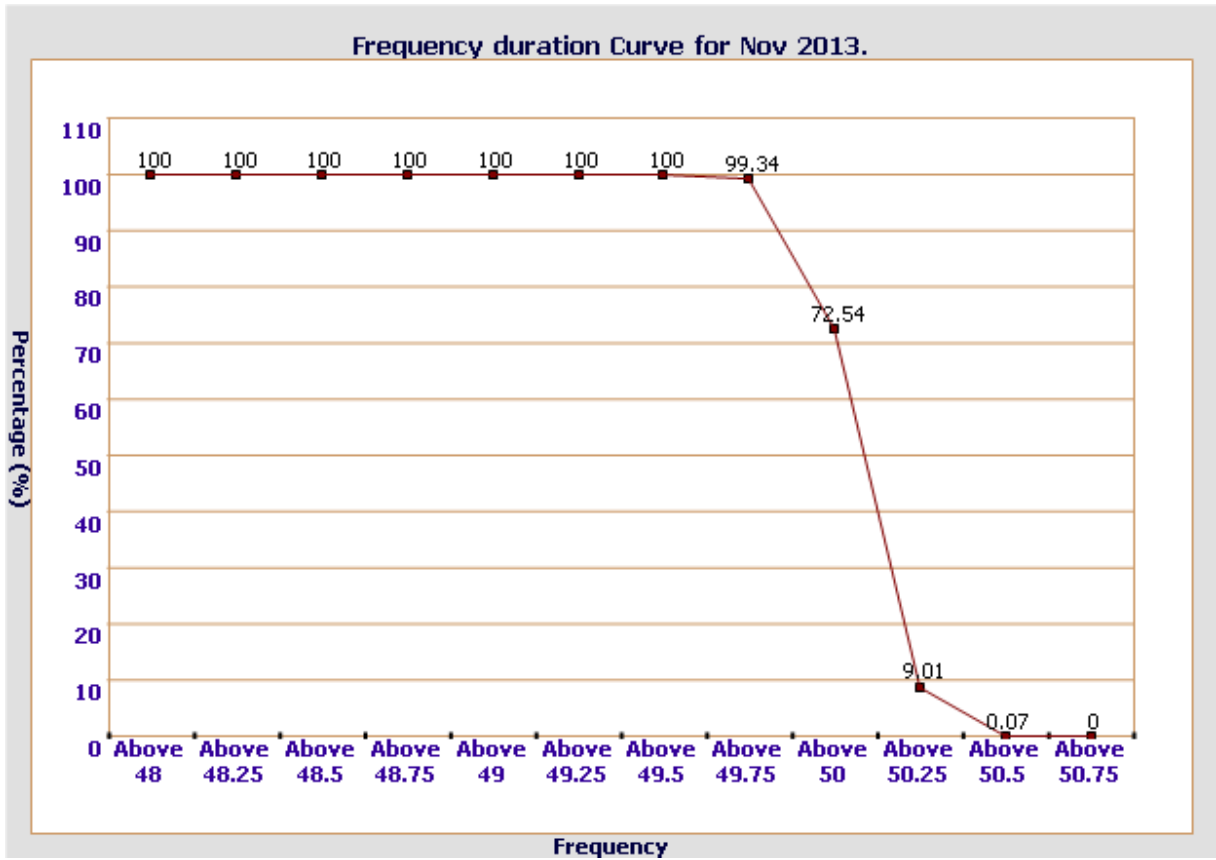
14 **LOAD DURATION CURVE FOR NOVEMBER 2013**

Load in MW	Percentage of Time
Above 1300	100 %
Above 1500	90.46 %
Above 1700	80.89 %
Above 1900	75.9 %
Above 2100	70.82 %
Above 2300	65.5 %
Above 2500	54.93 %
Above 2700	35.8 %
Above 2900	18.66 %
Above 3100	4.23 %
Above 3300	0.35 %
Above 3500	0.13 %



FREQUENCY ANALYSIS FOR THE MONTH OF NOVEMBER 2013

Frequency Range in Hz.	Percentage of time
Above 49.5	100 %
Above 49.75	99.34 %
Above 50	72.54 %
Above 50.25	9.01 %
Above 50.5	0.07 %
Above 50.75	0 %



**16 VOLTAGE PROFILE OF 220 KV SUB-STATIONS IN DELHI DURING NOVEMBER 2013**

**All figures in kV**

Date	NARELA		GAZIPUR	
	Max	Min	Max	Min
01-Nov-13	230.08	216.28	232.66	217.18
02-Nov-13	229.31	217.96	233.69	218.60
03-Nov-13	--	--	--	--
04-Nov-13	229.31	217.96	233.69	218.60
05-Nov-13	232.15	220.15	239.24	226.21
06-Nov-13	230.08	217.83	238.21	220.41
07-Nov-13	230.60	218.60	238.34	221.70
08-Nov-13	231.37	219.12	237.30	222.09
09-Nov-13	232.15	218.47	238.59	210.09
10-Nov-13	232.40	221.05	236.01	221.44
11-Nov-13	232.53	219.76	232.96	217.59
12-Nov-13	231.76	219.12	235.76	216.67
13-Nov-13	232.02	218.47	236.92	--
14-Nov-13	231.50	217.31	237.17	204.42
15-Nov-13	230.47	217.83	229.82	203.00
16-Nov-13	231.24	218.22	232.02	207.00
17-Nov-13	232.53	219.76	235.24	221.18
18-Nov-13	234.60	219.76	238.21	219.12
19-Nov-13	233.05	218.35	233.82	216.67
20-Nov-13	232.40	218.47	233.18	--
21-Nov-13	233.43	217.57	227.50	208.80
22-Nov-13	232.40	217.57	231.24	--
23-Nov-13	232.02	218.60	233.69	218.47
24-Nov-13	232.40	220.28	233.43	220.41
25-Nov-13	231.89	220.28	234.08	218.35
26-Nov-13	231.37	220.15	233.95	218.60
27-Nov-13	232.40	217.83	231.89	213.44
28-Nov-13	231.50	217.96	231.89	211.90
29-Nov-13	231.50	216.54	231.76	216.02
30-Nov-13	229.95	217.18	230.47	215.77

**17 VOLTAGE PROFILE OF 400 KV SUB-STATIONS IN DELHI DURING NOVEMBER 2013**  
**All figures in kV**

Date	400kV Barnauli Grid Sub-Station				
	Max KV	Max Time	Min KV	Min Time	Average KV
01-Nov-13	421.85	03.05.47	395.12	18.25.00	408.91
02-Nov-13	423.25	04.02.01	397.93	09.50.33	410.80
03-Nov-13	--	--	--	--	--
04-Nov-13	423.25	04.03.01	397.93	09.50.33	410.80
05-Nov-13	428.65	04.04.02	406.61	08.49.22	417.52
06-Nov-13	426.54	04.03.51	399.10	10.53.31	412.50
07-Nov-13	426.77	03.03.41	402.62	09.27.48	413.67
08-Nov-13	424.43	04.03.15	402.62	12.22.46	413.36
09-Nov-13	428.41	03.10.20	401.45	12.18.47	413.74
10-Nov-13	424.19	21.50.18	408.01	18.14.46	418.22
11-Nov-13	437.47	03.11.27	401.68	09.30.19	413.32
12-Nov-13	426.54	04.04.05	400.51	10.17.00	412.84
13-Nov-13	428.65	04.01.33	404.26	09.29.33	414.72
14-Nov-13	428.88	04.02.13	398.63	10.17.28	412.40
15-Nov-13	425.36	04.03.30	399.34	12.11.27	412.59
16-Nov-13	427.24	04.03.47	402.62	18.12.22	413.52
17-Nov-13	426.07	03.07.51	403.32	09.34.42	415.37
18-Nov-13	429.82	03.21.27	400.51	09.54.08	413.04
19-Nov-13	425.36	03.09.42	397.93	11.16.31	410.20
20-Nov-13	424.90	03.05.43	395.12	09.11.12	410.45
21-Nov-13	426.07	04.04.48	396.99	09.25.25	410.19
22-Nov-13	424.43	04.02.51	396.05	09.17.16	410.38
23-Nov-13	423.25	04.01.15	400.27	09.09.41	410.91
24-Nov-13	424.19	04.00.31	403.79	12.15.17	413.62
25-Nov-13	424.43	04.04.26	401.92	09.19.02	412.10
26-Nov-13	423.72	04.02.39	401.68	09.34.49	411.34
27-Nov-13	424.43	04.03.58	397.23	09.51.18	410.19
28-Nov-13	432.72	04.05.41	399.10	09.39.11	409.11
29-Nov-13	425.13	04.04.57	398.16	11.54.12	409.79
30-Nov-13	423.02	04.04.52	398.16	10.43.15	409.61

All figures in kV

Date	400kV Bawana Grid Sub-Station				
	Max KV	Max Time	Min KV	Min Time	Average KV
01-Nov-13	426.54	03.05.37	403.32	18.26.40	414.43
02-Nov-13	423.25	04.02.41	405.20	09.57.23	414.04
03-Nov-13	--	--	--	--	--
04-Nov-13	423.25	04.02.41	405.20	09.57.23	414.04
05-Nov-13	428.65	04.04.12	409.89	08.51.32	418.42
06-Nov-13	425.13	04.03.42	405.20	09.14.44	415.18
07-Nov-13	426.30	03.03.41	407.31	09.27.48	415.48
08-Nov-13	426.54	04.03.55	407.31	12.22.36	416.50
09-Nov-13	426.77	03.35.21	406.14	12.18.37	416.62
10-Nov-13	427.71	04.05.03	409.89	08.40.59	418.11
11-Nov-13	427.47	03.02.56	407.78	06.50.18	416.07
12-Nov-13	426.07	04.04.05	406.84	10.16.50	415.51
13-Nov-13	426.77	04.01.33	408.48	06.42.02	415.95
14-Nov-13	427.24	04.01.54	404.26	10.54.31	414.43
15-Nov-13	424.43	04.03.00	406.61	10.26.32	416.03
16-Nov-13	426.77	04.02.57	407.78	18.12.22	416.63
17-Nov-13	426.77	03.09.31	408.01	00.00.03	419.21
18-Nov-13	424.19	20.57.12	406.37	11.26.13	414.28
19-Nov-13	426.30	03.09.32	402.62	11.14.21	414.36
20-Nov-13	424.19	23.47.58	402.85	09.13.32	412.01
21-Nov-13	427.71	04.04.28	401.68	11.26.08	414.41
22-Nov-13	425.60	04.03.01	403.32	09.18.26	414.20
23-Nov-13	424.19	04.00.55	405.43	11.34.19	414.78
24-Nov-13	426.54	20.55.44	407.78	10.18.11	416.37
25-Nov-13	425.13	20.55.32	408.01	11.13.09	416.03
26-Nov-13	424.43	04.02.49	408.01	16.13.43	415.17
27-Nov-13	426.30	04.04.08	403.79	10.21.19	414.77
28-Nov-13	423.02	21.41.36	404.03	10.46.34	410.92
29-Nov-13	425.36	04.04.46	402.15	11.39.52	412.68
30-Nov-13	423.02	04.04.02	402.15	12.51.02	411.82

## 18 DETAILS OF LUMPED CAPACITORS AT NEAREST 220 KV SUBSTATION

Sl. No	SUB-STATION	INSTALLED CAPACITY			
		66KV	33KV	11KV	TOTAL
1	<b>IP YARD</b>		30		30
1	Kamla Market			16.35	16.35
2	Minto Road				0
3	GB Pant Hosp			15.88	15.88
4	Delhi Gate			10.9	10.9
5	Tilakmarg			5.04	5.04
7	Cannaught Place			10.08	10.08
8	Kilokri		10.08	10.48	20.56
9	NDSE				0
11	Nizamuddin				0
12	Exhibition-I				0
13	Exhibition-II				0
14	Defence Colony				0
15	IG Stadium		10.08	5.45	15.53
16	Lajpat Nagar				0
17	IP Estate			10.9	10.9
	<b>LT BYPL</b>				5.6
		0	50.16	85.08	140.84
2	<b>Electric Lane</b>				
1	Electric Lane			5.04	5.04
2	Scindia House			5.04	5.04
3	Raisina Road			10.08	10.08
4	Raja Bazar			10.08	10.08
	<b>LT NDMC</b>				12
		0	0	30.24	42.24
3	<b>RPH Station</b>		20		20
1	Lahori Gate			10.49	10.49
2	Jama Masjid			10.48	10.48
4	Kamla Market				0
5	Minto Road			10.9	10.9
6	GB Pant Hosp				0
7	IG Stadium				0
	<b>LT BYPL</b>				3
		0	20	31.87	54.87
4	<b>Parkstreet S/stn</b>	20	20		40
1	Shastri Park		10.896	5.45	16.346
2	Faiz Road			18.05	18.05
3	Motia Khan			16.3	16.3
4	Prasad Nagar			16.25	16.25
5	Anand Parbat			10.8	10.8
6	Shankar Road			5.04	5.04
7	Rama Road			0	0
8	Baird Road			10.08	10.08
9	Hanuman Road			5.04	5.04
10	Pusa			5.44	5.44
11	Ridge Valley			0	0
12	B. D. Marg			0	0
13	Nirman Bhawan			5.04	5.04
	<b>LT BYPL</b>			0	30.1
		20.00	30.90	97.49	178.486
5	<b>Naraina S/stn</b>		20	5.04	25.04
1	DMS			10.85	10.85
2	Mayapuri		10.87	10.4	21.27
3	Inderpuri		10	4.8	14.8
4	Rewari line				0
5	Khyber Lane		10.05		10.05
6	Kirbi Place		10.05		10.05
7	Payal			7.2	7.2
8	Saraswati Garden			10.88	10.88
		0	60.97	49.17	110.14

Sl. No	SUB-STATION	INSTALLED CAPACITY			
		66KV	33kV	11kV	TOTAL
<b>6</b>	<b>Mehrauli S/stn</b>	80		5.04	<b>85.04</b>
1	Adchini			14.61	<b>14.61</b>
2	Andheria Bagh			10.85	<b>10.85</b>
3	IIT			10.9	<b>10.9</b>
4	JNU		10.03	10.03	<b>20.06</b>
5	Bijwasan			15.47	<b>15.47</b>
6	DC Saket			9.98	<b>9.98</b>
7	Malviya Nagar				<b>0</b>
8	C Dot			10.48	<b>10.48</b>
9	Vasant kunj B-Blk	21.79		10.9	<b>32.69</b>
10	Vasant kunj C-Blk	20.16		10.48	<b>30.64</b>
11	Palam				<b>0</b>
12	IGNOU			5.04	<b>5.04</b>
13	R. K. Puram-I			10.07	<b>10.07</b>
14	Vasant Vihar			19.25	<b>19.25</b>
15	Pusp Vihar			10.44	<b>10.44</b>
16	Bhikaji Cama Place		10.08	10.07	<b>20.15</b>
	<b>LT BRPL</b>				<b>25</b>
		<b>121.95</b>	<b>20.11</b>	<b>163.61</b>	<b>330.67</b>
<b>7</b>	<b>Vasantkunj S/stn</b>	40		5.04	<b>45.04</b>
1	R. K. Puram-II			10.08	<b>10.08</b>
2	Vasant kunj C-Blk				<b>0</b>
3	Vasant kunj D-Blk			9.63	<b>9.63</b>
4	Ridge Valley				<b>0</b>
	<b>LT BRPL</b>				<b>33.2</b>
		<b>40</b>	<b>0</b>	<b>24.75</b>	<b>97.95</b>
<b>8</b>	<b>Okhla S/stn</b>	60	10	5.04	<b>75.04</b>
1	Balaji			10.8	<b>10.8</b>
2	East of Kailash			15.89	<b>15.89</b>
3	Alaknanda			16.3	<b>16.3</b>
4	Malviya Nagar	21.79		10.85	<b>32.64</b>
5	Masjid Moth			16.3	<b>16.3</b>
6	Nehru Place			21.34	<b>21.34</b>
7	Okhla Ph-I	21.79		16.3	<b>38.09</b>
8	Okhla Ph-II		20.93	15.47	<b>36.4</b>
9	Shivalik			10.8	<b>10.8</b>
10	Batra			15.9	<b>15.9</b>
11	VSNL			10.9	<b>10.9</b>
12	Siri Fort			10.49	<b>10.49</b>
13	Tuglakabad			10.85	<b>10.85</b>
	<b>LT BRPL</b>				<b>59</b>
		<b>103.58</b>	<b>30.93</b>	<b>187.23</b>	<b>380.74</b>
<b>9</b>	<b>Lodhi Road S/stn</b>		20		<b>20</b>
1	Defence Colony		14.85		<b>14.85</b>
2	Hudco		10.9		<b>10.9</b>
3	Lajpat Nagar		10.9		<b>10.9</b>
4	Nizamuddin		10.44		<b>10.44</b>
5	Vidyut Bhawan				<b>0</b>
6	Ex. Gr. II				<b>0</b>
7	IHC				<b>0</b>
	<b>LT BRPL</b>				<b>42</b>
		<b>0</b>	<b>67.09</b>	<b>0</b>	<b>109.09</b>
<b>10</b>	<b>Sarita Vihar S/stn</b>	20		5.04	<b>25.04</b>
1	Sarita Vihar			10.07	<b>10.07</b>
2	MCIE			10.06	<b>10.06</b>
3	Mathura Road	20.16		11.69	<b>31.85</b>
4	Jamia Millia			10.89	<b>10.89</b>
5	Sarai Julena		10.08	16.29	<b>26.37</b>
6	Jasola			5.44	<b>5.44</b>
	<b>LT BRPL</b>				<b>23.6</b>
		<b>40.16</b>	<b>10.08</b>	<b>69.48</b>	<b>143.32</b>

Sl. No	SUB-STATION	INSTALLED CAPACITY			
		66KV	33kV	11kV	TOTAL
<b>11</b>	<b>Wazirabad</b>				
1	Bhagirathi		14.4	10.9	<b>25.3</b>
2	Ghonda	21.79	22.56	15.94	<b>60.29</b>
3	Seelam Pur		10.08	21.39	<b>31.47</b>
4	Dwarkapuri			15.46	<b>15.46</b>
5	Nandnagri	20.16		16.35	<b>36.51</b>
6	Yamuna Vihar			16.2	<b>16.2</b>
7	East of Loni Road			10.8	<b>10.8</b>
8	Shastri Park			10.9	<b>10.9</b>
9	Karawal Nagar			5.4	<b>5.4</b>
10	Sonia Vihar			7.2	<b>7.2</b>
	<b>LT BYPL</b>				<b>10</b>
		<b>41.95</b>	<b>47.04</b>	<b>130.54</b>	<b>229.53</b>
<b>12</b>	<b>Geeta Colony</b>				
1	Geeta Colony				<b>0</b>
2	Kanti Nagar			10.49	<b>10.49</b>
3	Kailash Nagar			10.9	<b>10.9</b>
4	Seelam Pur			15.48	<b>15.48</b>
5	Shakar Pur				<b>0</b>
	<b>LT BYPL</b>				<b>5.8</b>
		<b>0</b>	<b>0</b>	<b>36.87</b>	<b>42.67</b>
<b>13</b>	<b>Gazipur S/stn</b>	40		5.04	<b>45.04</b>
1	Dallupura	28.8		10.9	<b>39.7</b>
2	Vivek Vihar			9.57	<b>9.57</b>
3	GT Road			10.85	<b>10.85</b>
4	Kondli	20.16		10.85	<b>31.01</b>
5	MVR-I			10.9	<b>10.9</b>
6	MVR-II	20.16		10.9	<b>31.06</b>
7	PPG Ind. Area			10.06	<b>10.06</b>
	<b>LT BYPL</b>				<b>20.6</b>
		<b>109.12</b>	<b>0</b>	<b>79.07</b>	<b>208.79</b>
<b>14</b>	<b>Patparganj S/stn</b>	40	20	5.04	<b>65.04</b>
1	GH-I	19.89		10.45	<b>30.34</b>
2	GH-II	20.09		10.9	<b>30.99</b>
3	CBD		10.03	15.48	<b>25.51</b>
4	Guru Angad Nagar			15.49	<b>15.49</b>
5	Karkadooma		10.8	10.44	<b>21.24</b>
6	Preet Vihar			10.07	<b>10.07</b>
7	CBD-II			10.8	<b>10.8</b>
8	Shakarpur			10.8	<b>10.8</b>
9	Jhilmil			10.8	<b>10.8</b>
10	Dilshad Garden	20.16		16.35	<b>36.51</b>
11	Khichripur	21.79		10.49	<b>32.28</b>
12	Mother Dairy				<b>0</b>
13	Scope Building				<b>0</b>
14	Vivek Vihar				<b>0</b>
15	Akhardham			14.6	<b>14.6</b>
	<b>LT BYPL</b>				<b>23.3</b>
		<b>121.93</b>	<b>40.83</b>	<b>151.71</b>	<b>337.77</b>
<b>15</b>	<b>Najafgarh S/stn</b>	60		5.04	<b>65.04</b>
1	A4 Paschim Vihar			10.8	<b>10.8</b>
2	Nangloi	21.73		15.84	<b>37.57</b>
3	Nangloi W/W	20.89		10.85	<b>31.74</b>
4	Pankha Road			15.88	<b>15.88</b>
5	Jaffarpur			15.43	<b>15.43</b>
7	Inst. Area Janakpuri			17.6	<b>17.6</b>
8	Paschimpuri		10.05	15.47	<b>25.52</b>
9	Paschim Vihar	41.83		15.43	<b>57.26</b>
10	Mukherjee Park			20.83	<b>20.83</b>
11	Udyog Nagar			10.43	<b>10.43</b>
12	Choukhandi			10.07	<b>10.07</b>
	<b>LT BRPL</b>				<b>27</b>
		<b>144.45</b>	<b>10.05</b>	<b>163.67</b>	<b>345.17</b>



Sl. No	SUB-STATION	INSTALLED CAPACITY			
		66KV	33kV	11kV	TOTAL
<b>16</b>	<b>Pappankalan-I S/stn</b>	20		5.04	<b>25.04</b>
1	Bindapur Grid G-3 PPK	21.73		15.85	<b>37.58</b>
2	Bodella-I	20.1		16.24	<b>36.34</b>
3	Bodella-II	21.73		17.64	<b>39.37</b>
4	DC Janakpuri			10.03	<b>10.03</b>
5	G-2 PPK			10.8	<b>10.8</b>
6	G-5 PPK			15.51	<b>15.51</b>
7	G-6 PPK			5.4	<b>5.4</b>
8	G-15 PPK			10.8	<b>10.8</b>
9	Harinagar	21.18		16.25	<b>37.43</b>
10	Rewari line			5.44	<b>5.44</b>
	<b>LT BRPL</b>				<b>13.5</b>
		<b>104.74</b>	<b>0</b>	<b>129</b>	<b>247.24</b>
<b>17</b>	<b>BBMB Rohtak Road</b>				
1	S.B. Mill			10.07	<b>10.07</b>
2	Rama Road			10.88	<b>10.88</b>
3	Ram Pura			10.48	<b>10.48</b>
4	Rohtak Road			8.04	<b>8.04</b>
5	Vishal			10.4	<b>10.4</b>
6	Tri Nagar			5.44	<b>5.44</b>
7	Madipur			10.43	<b>10.43</b>
8	Sudershan Park			10.08	<b>10.08</b>
9	Kirti Nagar			5.44	<b>5.44</b>
		<b>0</b>	<b>0</b>	<b>81.26</b>	<b>81.26</b>
<b>18</b>	<b>Shalimarbagh S/stn</b>		40	6	<b>46</b>
1	S.G.T. Nagar			5.44	<b>5.44</b>
2	Wazirpur-1			17.18	<b>17.18</b>
3	Wazirpur-2			11.39	<b>11.39</b>
4	Ashok Vihar			5.44	<b>5.44</b>
5	Rani Bagh			10.88	<b>10.88</b>
6	Haiderpur			11.39	<b>11.39</b>
7	SMB FC			5.44	<b>5.44</b>
8	SMB KHOSLA			5.44	<b>5.44</b>
	<b>LT TPDDL</b>				<b>30</b>
		<b>0</b>	<b>40</b>	<b>78.6</b>	<b>148.6</b>
<b>19</b>	<b>Subzimandi S/stn</b>			6	<b>6</b>
1	Shakti Nagar			5.94	<b>5.94</b>
2	Gulabibagh			10.88	<b>10.88</b>
3	Shahzadabagh			13.68	<b>13.68</b>
4	DU			5.44	<b>5.44</b>
5	Tripolia			10.88	<b>10.88</b>
	B. G. Road			5.4	<b>5.4</b>
	<b>LT BYPL</b>				<b>0.9</b>
	<b>LT TPDDL</b>				<b>20</b>
		<b>0</b>	<b>0</b>	<b>58.22</b>	<b>79.12</b>
<b>20</b>	<b>Narela S/stn</b>	40		5.04	<b>45.04</b>
1	A-7 Narela			10.88	<b>10.88</b>
2	AlR Kham pur			6	<b>6</b>
3	Ashok vihar			10.48	<b>10.48</b>
4	Azad Pur			5.44	<b>5.44</b>
5	Tri Nagar			5.44	<b>5.44</b>
6	Badli	20		5.95	<b>25.95</b>
7	DSIDC Narela-1			5.95	<b>5.95</b>
8	GTK			5.44	<b>5.44</b>
9	Jahangirpuri	20	10	0	<b>30</b>
10	Bhalswa			3.6	<b>3.6</b>
	<b>LT TPDDL</b>				<b>10</b>
		<b>80</b>	<b>10</b>	<b>64.22</b>	<b>164.22</b>

Sl. No	SUB-STATION	INSTALLED CAPACITY			
		66KV	33kV	11kV	TOTAL
<b>21</b>	<b>Gopalpur S/stn</b>		30	5.04	<b>35.04</b>
1	Azad Pur			10.88	<b>10.88</b>
2	Hudson Lane			5.44	<b>5.44</b>
3	Wazirabad			2.4	<b>2.4</b>
4	Indra Vihar			5.44	<b>5.44</b>
6	GTK Road			5.94	<b>5.94</b>
7	Jahangirpuri		10	5.95	<b>15.95</b>
8	Civil lines			5.44	<b>5.44</b>
9	Pitam Pura-1			5.44	<b>5.44</b>
10	Pitam Pura-3			5.44	<b>5.44</b>
11	Air Khampur			5.95	<b>5.95</b>
12	SGT Nagar			5.95	<b>5.95</b>
13	Tiggipur			10.88	<b>10.88</b>
	<b>LT TPDDL</b>				<b>29</b>
		<b>0</b>	<b>40</b>	<b>80.19</b>	<b>149.19</b>
<b>22</b>	<b>Rohini S/stn</b>	40		6	<b>46</b>
1	Rohini Sec-22			10.88	<b>10.88</b>
2	Rohini Sec-23	20		5.44	<b>25.44</b>
3	Rohini Sec-24			5.44	<b>5.44</b>
4	Rohini-1			5.44	<b>5.44</b>
5	Rohini-3			5.95	<b>5.95</b>
6	Rohini-4			11.39	<b>11.39</b>
7	Rohini-5			11.39	<b>11.39</b>
8	Rohini-6			5.95	<b>5.95</b>
9	Mangolpuri-1			16.83	<b>16.83</b>
10	Mangolpuri-2	20		5.94	<b>25.94</b>
11	Pitam Pura-1	20		5.04	<b>25.04</b>
12	Pitam Pura-2			10.48	<b>10.48</b>
13	Rohini DC-1			14.4	<b>14.4</b>
	<b>LT TPDDL</b>				<b>30</b>
		<b>100</b>	<b>0</b>	<b>120.57</b>	<b>250.57</b>
<b>23</b>	<b>Kanjhawala S/stn</b>	20		5.04	<b>25.04</b>
1	Bawana Clear Water			10.88	<b>10.88</b>
2	Pooth Khoord			5.44	<b>5.44</b>
		<b>20</b>	<b>0</b>	<b>21.36</b>	<b>41.36</b>
<b>24</b>	<b>BAWANA S/stn</b>				
1	Bawana S/stn No. 6			10.88	<b>10.88</b>
2	Bawana S/stn No. 7				<b>0</b>
		<b>0</b>	<b>0</b>	<b>10.88</b>	<b>10.88</b>
<b>25</b>	<b>Kashmeregate S/stn</b>			5.04	<b>5.04</b>
1	Civil lines			5.44	<b>5.44</b>
2	Town Hall			8.64	<b>8.64</b>
3	Fountain			5.45	<b>5.45</b>
	<b>LT BYPL</b>				<b>2.7</b>
		<b>0</b>	<b>0</b>	<b>24.57</b>	<b>27.27</b>
<b>26</b>	<b>Pappankalan-II</b>				
1	DMRC-I				<b>0</b>
2	DMRC-II				<b>0</b>
<b>27</b>	<b>Trauma Center (AIIMS)</b>				
1	AIIMS		13.26	5.04	<b>18.3</b>
2	Trauma Center			10.08	<b>10.08</b>
3	Netaji Nagar			15.12	<b>15.12</b>
4	Sanjay Camp			10.08	<b>10.08</b>
5	Kidwai Nagar			5.04	<b>5.04</b>
6	SJ Airport			5.04	<b>5.04</b>
	Race Course			5.04	<b>5.04</b>
		<b>0</b>	<b>13.26</b>	<b>55.44</b>	<b>68.7</b>

Sl. No	SUB-STATION	INSTALLED CAPACITY			
		66KV	33kV	11kV	TOTAL
<b>28</b>	<b>MUNDKA</b>				
	Rohini-2			11.39	<b>11.39</b>
	<b>LT BRPL</b>				<b>18.5</b>
		<b>0</b>	<b>0</b>	<b>11.39</b>	<b>29.89</b>
<b>29</b>	<b>DSIDC BAWANA</b>				
	DSIDC NRL-1	20			<b>20</b>
	DSIDC NRL-2			10.88	<b>10.88</b>
		<b>20</b>	<b>0</b>	<b>10.88</b>	<b>30.88</b>
<b>30</b>	<b>RIDGE VALLEY</b>				
	Keventry Diary			10.08	<b>10.08</b>
	Nehru Park			5.04	<b>5.04</b>
	Bapu Dham			10.08	<b>10.08</b>
		<b>0</b>	<b>0</b>	<b>25.2</b>	<b>25.2</b>
<b>31</b>	<b>IP EXTN (PRAGATI)</b>				
	Vidyut Bhawan			10.08	<b>10.08</b>
	Dalhousie Road			5.04	<b>5.04</b>
	School Lane			5.04	<b>5.04</b>
	<b>LT NDMC</b>				<b>12.29</b>
		<b>0</b>	<b>0</b>	<b>20.16</b>	<b>32.45</b>
	<b>TOTAL CAPACITY</b>	<b>1067.9</b>	<b>491.4</b>	<b>2092.7</b>	<b>4139</b>

Utility	HT	LT	Total
<b>BYPL</b>	<b>864</b>	<b>102</b>	<b>966</b>
<b>TPDDL</b>	<b>657</b>	<b>119</b>	<b>776</b>
<b>NDMC</b>	<b>180</b>	<b>24</b>	<b>204</b>
<b>DTL</b>	<b>754</b>	<b>0</b>	<b>754</b>
<b>BRPL</b>	<b>1158</b>	<b>242</b>	<b>1400</b>
<b>RPH</b>	<b>20</b>	<b>0</b>	<b>20</b>
<b>MES</b>	<b>20</b>	<b>0</b>	<b>20</b>
<b>TOTAL</b>	<b>3652</b>	<b>487</b>	<b>4139</b>

## 20 DETAILS OF BREAK-DOWNS DURING THE MONTH OF NOVEMBER 2013

SL NO	OCCURRENCE OF BREAK-DOWN		DETAILS OF THE BREAKDOWN	TIME OF RESTORATION		REMARKS
	DATE	TIME		DATE	TIME	
1	01.11.13	13:14	220kV SARITA VIHAR - BTPS CKT.-I	01.11.13	17:00	AT SARITA VIHAR CKT TRIPPED ON D/P,B-PH,E/F. AT BTPS CKT TRIPPED ON E/F.
2	02.11.13	10:55	OKHLA 66kV OKHLA PHASE-I CKT-I	02.11.13	11:50	WHILE ARRANGING S/D CKT TRIPPED ON VT FUSE FAIL.
3	03.11.13	18:20	LODHI RD 33/11kV, 16MVA Tx-III	03.11.13	21:10	11KV I/C-3 TRIPPED ON O/C,86. SPARKING OCCURRED ON 11KV TELEPHONE EXCHANGE FEEDER.
4	04.11.13	07:17	PARKSTREET 66/33kV, 30MVA Tx-I	04.11.13	09:58	TX TRIPPED ON OLTC BUCHHOLZ INDICATION,80AB,86
5	04.11.13	15:02	SUBZI MANDI 33/11kV, 16MVA Tx-II	04.11.13	16:42	TX TRIPPED ON O/C,E/F,86. 11KV I/C-2 TRIPPED ON O/C.
6	06.11.13	09:43	LODHI RD 33/11kV, 16MVA Tx-III	06.11.13	18:15	TX TRIPPED ON O/C,E/F. O/C RELAY APPEARED ON I/C-3 BUT DID-NOT.
7	07.11.13	1:19	KANJHAWALA 66/11kV, 20MVA Tx-I	07.11.13	02:03	TR. TRIPPED ON OLTC. BUCHOLZ, 11KV I/C-I ALSO TRIPPED ON HIGH SPEED RELAY, 86, SMOKE OBSERVED ON VCB
8	07.11.13	14:00	KANJHAWALA 66/11kV, 20MVA Tx-I	07.11.13	17:53	TR. TRIPPED ON AUX, OLTC, BUCH WITH 11KV I/C-I
9	08.11.13	16:07	GOPALPUR 33kV INDRA VIHAR CKT-II	08.11.13	20:36	CKT. TRIPPED ON DIST. PROT. ZONE-I, Y PHASE 86
10	08.11.13	18:10	INDRAPRASTHA POWER 33kV EXHIBITION GR-I CKT (BAY-7)	08.11.13	18:33	CKT. TRIPPED ON O/C, R & B PHASE
11	08.11.13	23:13	NARAINA 33/11kV, 16MVA Tx-I	09.11.13	07:52	16MVA PR.TR. -I ALONGWITH 11KV I/C-I TRIPPED ON MASTER RELAY, OLTC, BUCH RELAY
12	09.11.13	11:14	NAJAFGARH 66kV JAFFERPUR CKT-II	09.11.13	12:09	CKT. TRIPPED ON DIST. PROT. ZONE -1, 86
13	10.11.13	13:04	KASHMIRI GATE 33kV JAMA MASJID	10.11.13	14:28	CKT. TRIPPED ON DIST. PROT. ZONE 2&3, R&Y,EARTH FAULT, OVER CURRENT, 86 RELAY
14	12.11.13	21:15	GAZIPUR 220/66kV 100MVA Tx-I	13.11.13	20:10	COMPRESSOR TERMINAL BOX OF TR. -I BURNT. TR. MADE OFF.
15	13.11.13	10:37	220 KV PATPARGANJ - I.P. CKT-II	17.11.13	09:30	EMERGENCY SHUTDOWN FOR THREE DAYS OF CKT. DUE TO FIRE OBSERVED IN CONTROL CABLE & FOR OVERHAULING OF CKT. BREAKER
16	13.11.13	10:55	INDRAPRASTHA POWER 220/33kV 100MVA Tx-II	13.11.13	12:20	TR. PUT OFF DUE TO FIRE OBSERVED IN CONTROL CABLES AT I.P.STN.
17	13.11.13	10:57	220 KV PATPARGANJ - I.P. CKT-I	13.11.13	17:50	CKT. PUT OFF DUE TO FIRE OBSERVED IN CONTROL CABLE AT I.P.
18	13.11.13	11:25	220 KV I.P. - RPH CKT-II	13.11.13	15:25	CKT. PUT OFF DUE TO FIRE OBSERVED IN CONTROL CABLES AT I.P.STN
19	14.11.13	6:44	GOPALPUR 33/11kV, 16MVA Tx-I	14.11.13	06:53	TX TRIPPED ON O/C, R-PH AND 11KV I/C-1 TRIPPED ON O/C.
20	15.11.13	10:23	220KV BAWANA-SHALIMARBAGH CKT-II	15.11.13	10:33	AT SHALIMARBAGH CKT TRIPPED ON D/P,C-PH,AUTO RE-CLOSE. NO TRIPPING AT BAWANA.
21	16.11.13	11:33	DSIIDC Bawana 220/66kV 100MVA Tx-II	16.11.13	11:54	TX TRIPPED ON 86. 66KV I/C-2 TRIPPED ON LBB PROTECTION 96.
22	16.11.13	11:33	DSIIDC Bawana 220/66kV 100MVA Tx-III	16.11.13	11:54	TX TRIPPED ON 86. 66KV I/C-2 TRIPPED ON LBB PROTECTION 96,86.
23	18.11.13	8:17	OKHLA 220/33kV 100MVA Tx-IV	18.11.13	08:46	33KV I/C-4 TRIPPED ON E/F,86.
24	18.11.13	8:17	OKHLA 220/33kV 100MVA Tx-III	18.11.13	08:46	33KV I/C-3 TRIPPED ON E/F,86.
25	18.11.13	8:17	OKHLA 33kV NEHRU PLACE CKT-II	20.11.13	11:45	R-PH POLE OF CKT BREAKER DAMAGED AT OKHLA 220KV.
26	21.11.13	11:18	WAZIRABAD 220/66kV 100MVA Tx-II	21.11.13	15:14	TX TRIPPED ON PRV.
27	23.11.13	17:10	PAPPANKALAN-I 66kV REWARI LINE CKT	23.11.13	17:40	CKT. TRIPPED ON DISTANCE PROT. R PHASE ZONE-I

SL NO	OCCURRENCE OF BREAK-DOWN		DETAILS OF THE BREAKDOWN	TIME OF RESTORATION		REMARKS
	DATE	TIME		DATE	TIME	
28	24.11.13	17:47	BAWANA 400/220kV 315MVA ICT-I	24.11.13	18:06	CB NO. 1352 OF 220KV I/C -I TRIPPED ON AUTO TRIP
29	26.11.13	12:16	LODHI RD 220/33kV 100MVA Tx-II	26.11.13	15:56	TR. TRIPPED ON TIMER LBB PROT. ALONGWITH 33KV I/C-II, SPARKING OBSERVED ON ON LA 220KV SIDE
30	26.11.13	12:16	220KV MAHARANI BAGH - LODHI ROAD CKT-II	26.11.13	15:46	CKT. TRIPPED AT BOTH END. AT MAHARANI BAGH : A/R LOCK OUT AT LOADHI ROAD, 86ABC, DIST. PORT, A/R, 186
31	26.11.13	23:34	ROHINI-II 220/66kV 160MVA Tx-I	27.11.13	00:12	TR. TRIPPED WITHOUT INDICATION
32	28.11.13	4:07	DSIIDC Bawana 220/66kV 100MVA Tx-III	28.11.13	04:33	TR. TRIPPED ON 86, O/C, E/F WITH 66KV I/C-III TRIPPED ON O/C, E/F, LBB, 86, 96, 50/51
33	28.11.13	4:07	DSIIDC Bawana 220/66kV 100MVA Tx-II	28.11.13	04:33	TR. TRIPPED ON 86, WITH 66KV I/C-II TRIPPED ON 96, LBB
34	28.11.13	5:25	GAZIPUR 220/66kV 100MVA Tx-I	28.11.13	05:40	66KV I/C-I TRIPPED ON TRIP CKT. SUPERVISION, 86 E/F
35	29.11.13	20:28	LODHI RD 33/11kV, 16MVA Tx-III	29.11.13	23:09	TR. TRIPPED ON O/C ON ALL PHASES WITH 11KV I/C-III. HEAVY SMOKE IN 11KV BREAKER -III
36	30.11.13	8:15	WAZIRABAD 66/11kV, 20MVA Tx-III	30.11.13	09:28	TR. TRIPPED ON LOW GAS PRESSURE IN THE BREAKER

**20 DETAILS OF UNDER FREQUENCY RELAY OPERATIONS IN DELHI POWER SYSTEM DURING THE MONTH OF NOVEMBER 2013**

DATE	S. N.	TIME		Name of Grid	NAME OF AFFECTED FEEDERS	MODE	LOAD RELIEF IN MW
		OUT	IN				
12.11.13	1	8:08	08:11	GEETA COLONY 220kV	KAILASH NAGAR CKT. I & II	DF/DT	10
18.11.13	2	17:24	17:32	LODHI ROAD	VIDYUT BHAWAN CKT, IHC CKT. I & II 11KV LOAD	DF/DT	5
18.11.13	3	17:23	17:28	GOPALPUR	11KV LOAD	DF/DT	4
18.11.13	4	17:31	18:06	KASHMIRI GATE	JAMA MASJID	DF/DT	16
22.11.13	5	17:17	18:00	RANI BAGH	11KV LOAD	MALFUNCTION	2
22.11.13	6	17:17	18:50	RANI BAGH	11KV LOAD	MALFUNCTION	1
22.11.13	7	17:17	18:20	RANI BAGH	11KV LOAD	MALFUNCTION	2
24.11.13	8	12:20	12:25	PATPARGANJ	PREET VIHAR	DF/DT	10
27.11.13	9	19:31	19:35	SHALIMARBAGH	SMB KHOSLA CKT., WAZIRPUR-II CKT-I	DF/DT	15
30.11.13	10	15:40	15:46	KASHMIRI GATE	JAMA MASJID	DF/DT	13
30.11.13	11	15:41	15:43	GEETA COLONY	KAILASH NAGAR CKT. I & II	DF/DT	17